






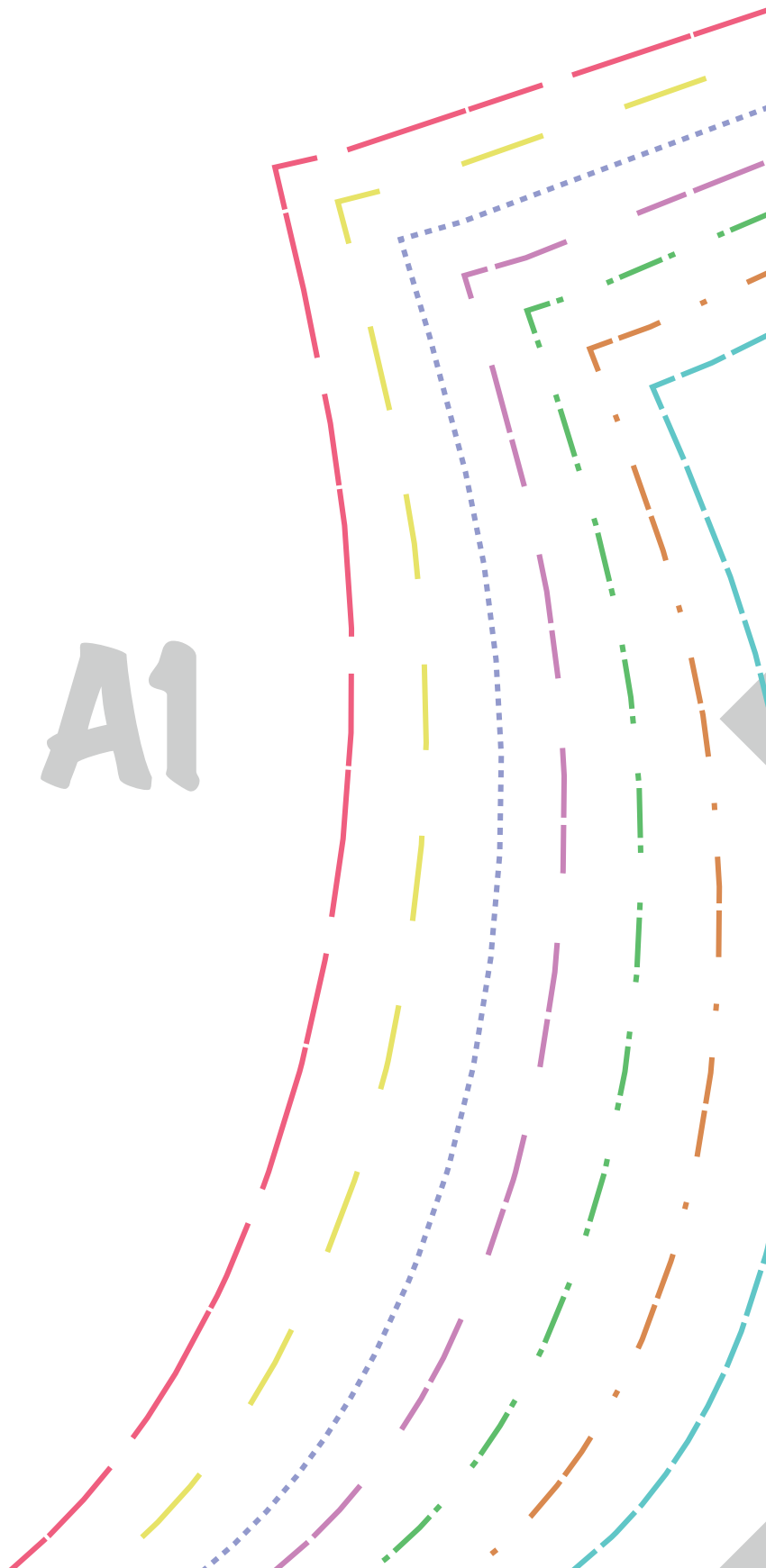
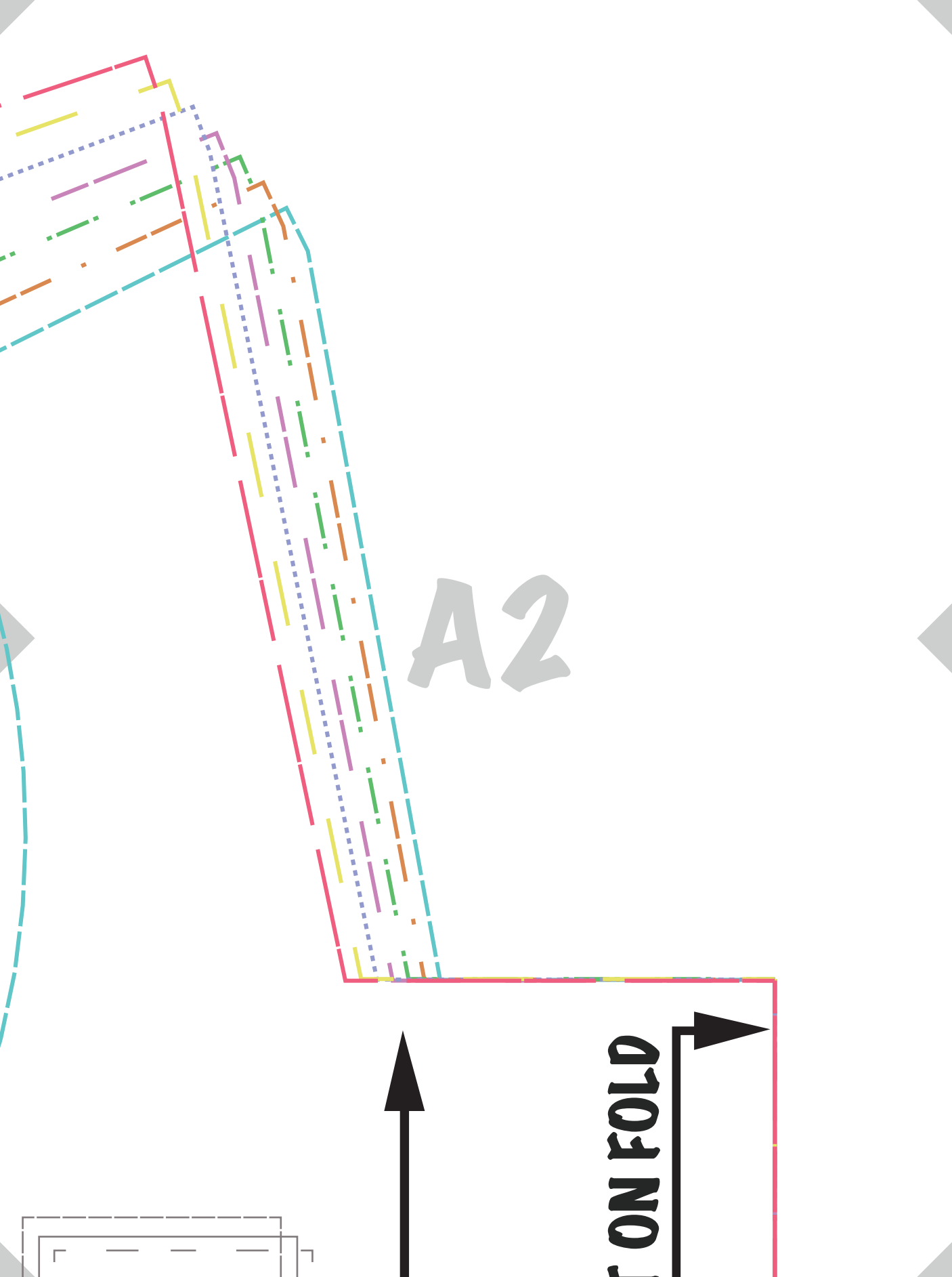


TEST SQUARE
2" X 2"
5 CM X 5 CM

XS	
S	
M	
L	
XL	
XXL	
XXXL	

A1





A2

ON FOLD



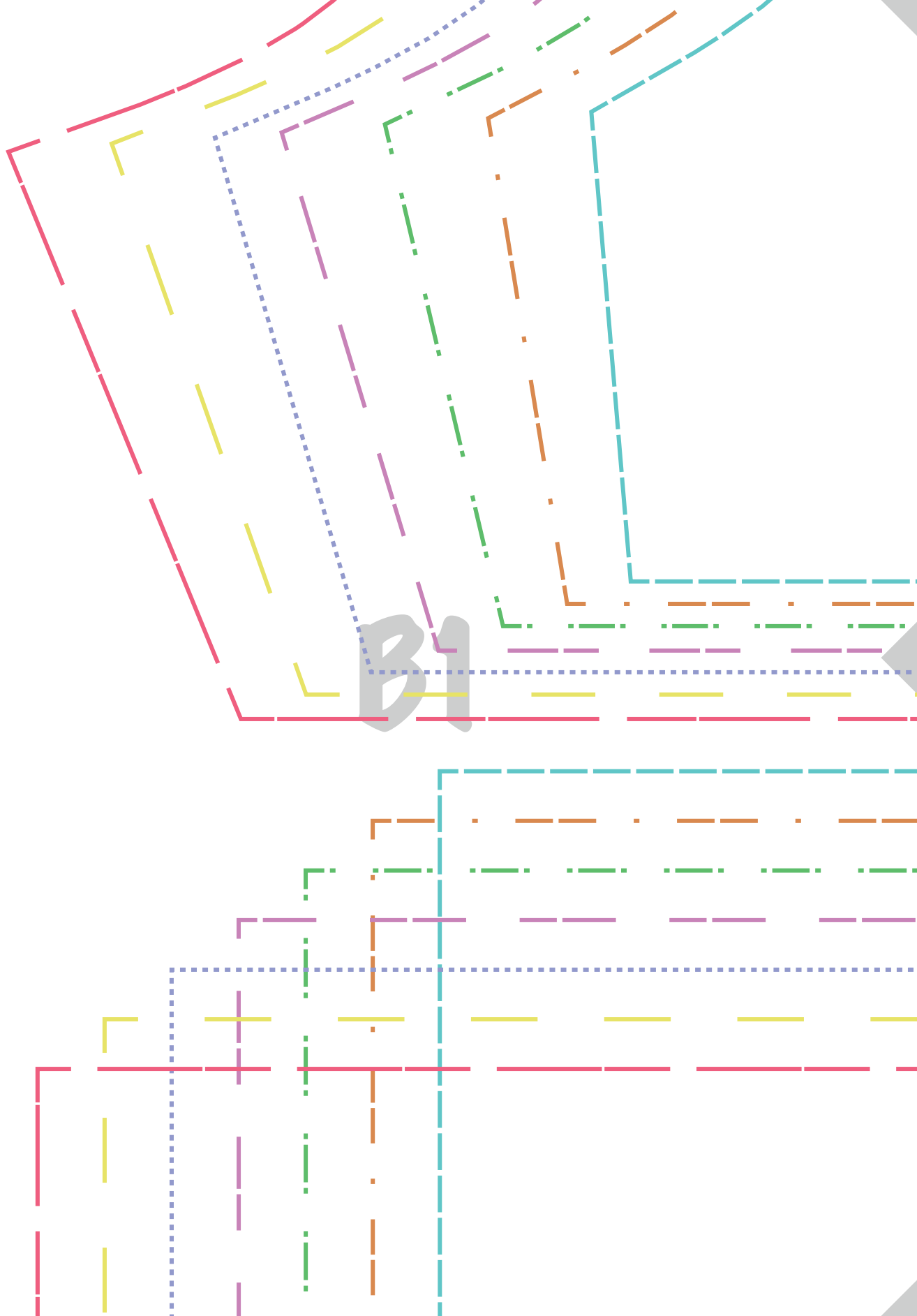
A3

**patterns
for less**

**B
BACK TOP
CUT 2**

A decorative graphic in the bottom-left corner of the page. It consists of several overlapping, curved lines in various colors: red, yellow, purple, green, orange, and blue. The lines are drawn with different dash patterns, including solid, dashed, and dotted. The lines curve from the bottom-left towards the center of the page.

A4

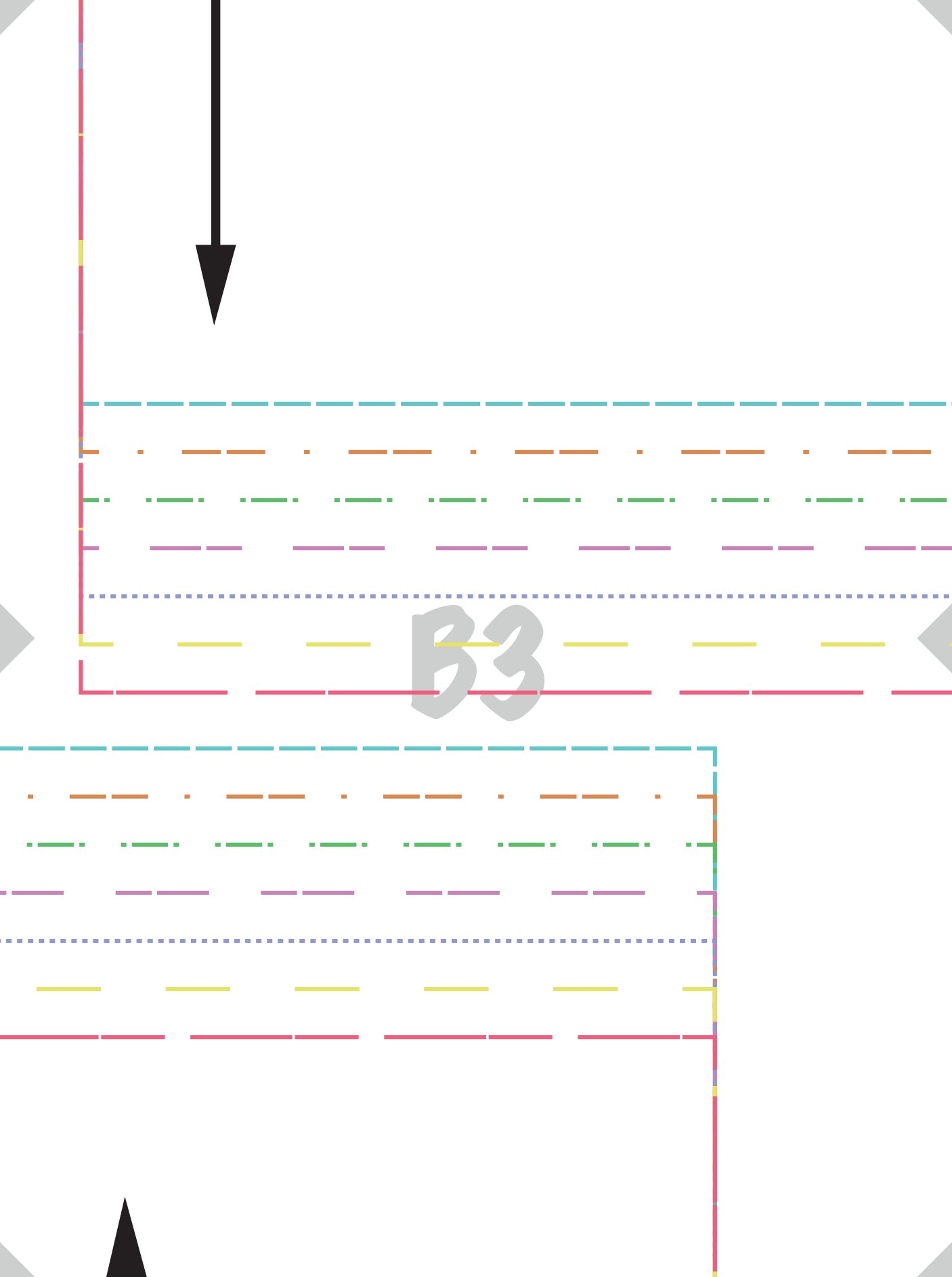


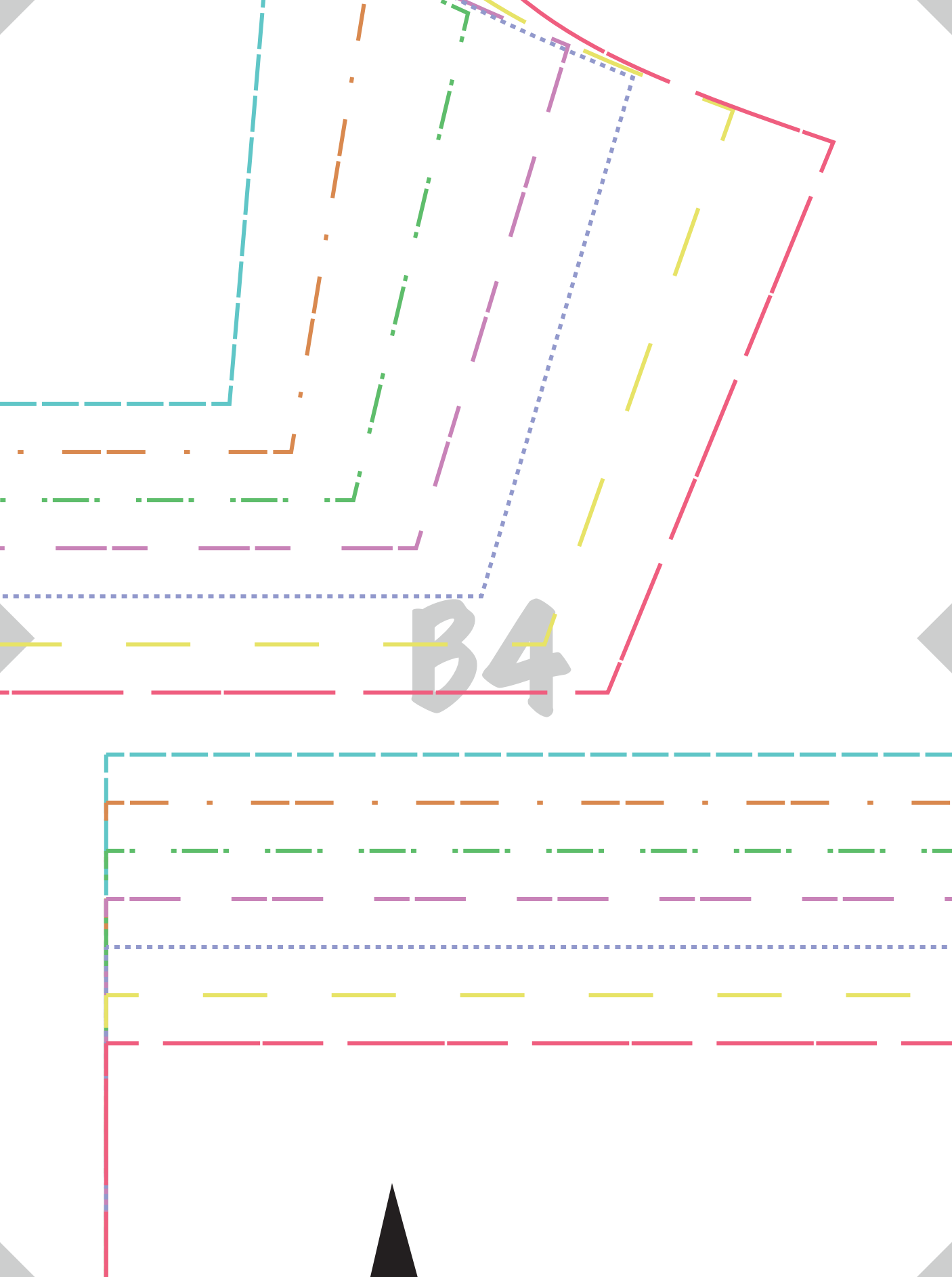
**patterns
for less**

**A
FRONT TOP
CUT 2**

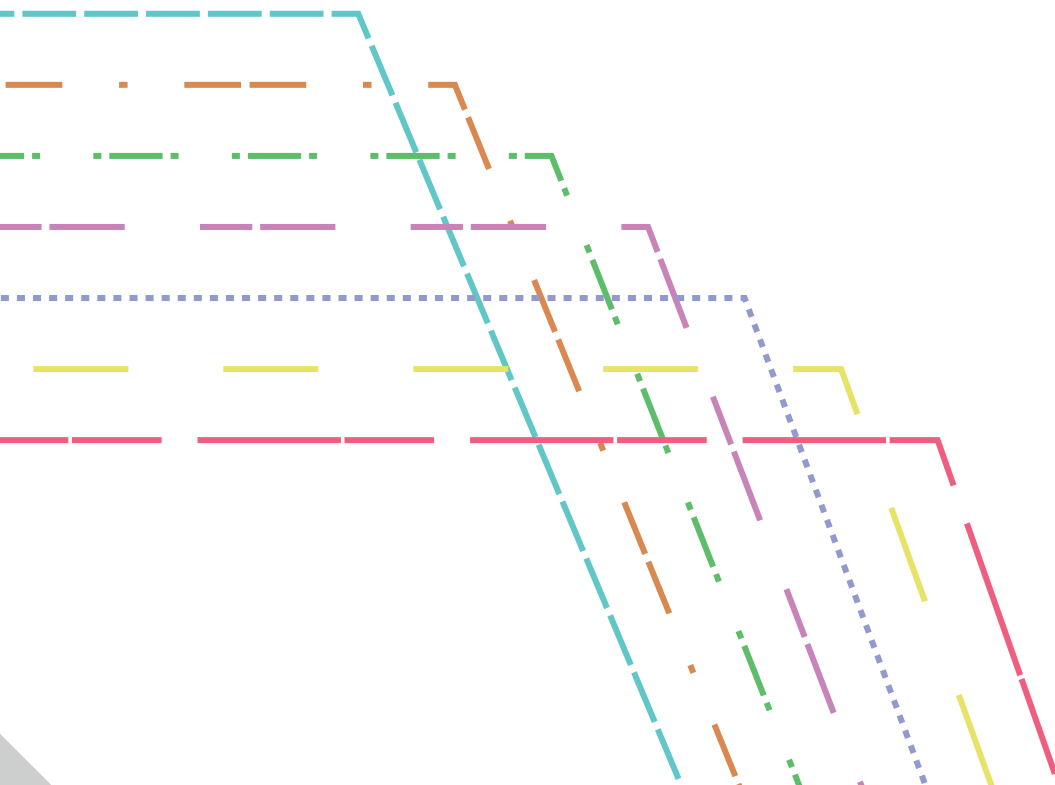
CENTER FRONT CUT

B2





B5



c1

C2

**patterns
for less**

DO NOT CUT ON FOLD





C4

**pattern
for less**

C5



C6

F
BACK NECK BINDING
CUT 2

**patterns
for less**



D1

C
FRONT SKIRT
CUT 1

D2



CENTER FR

D3



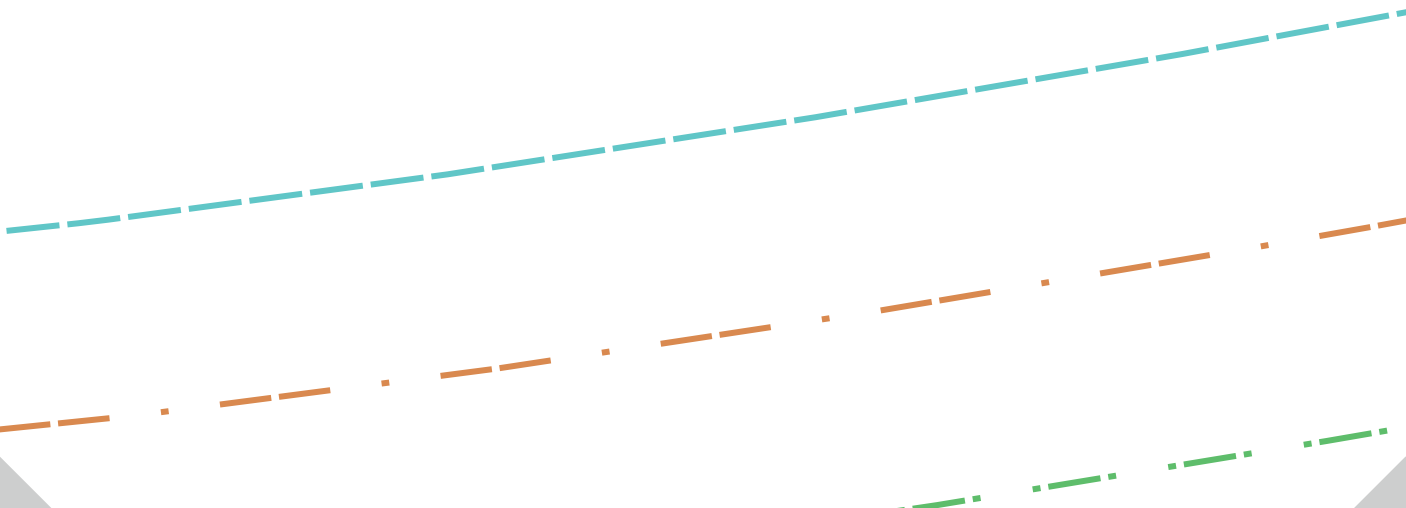
D BACK SKIRT CUT 2

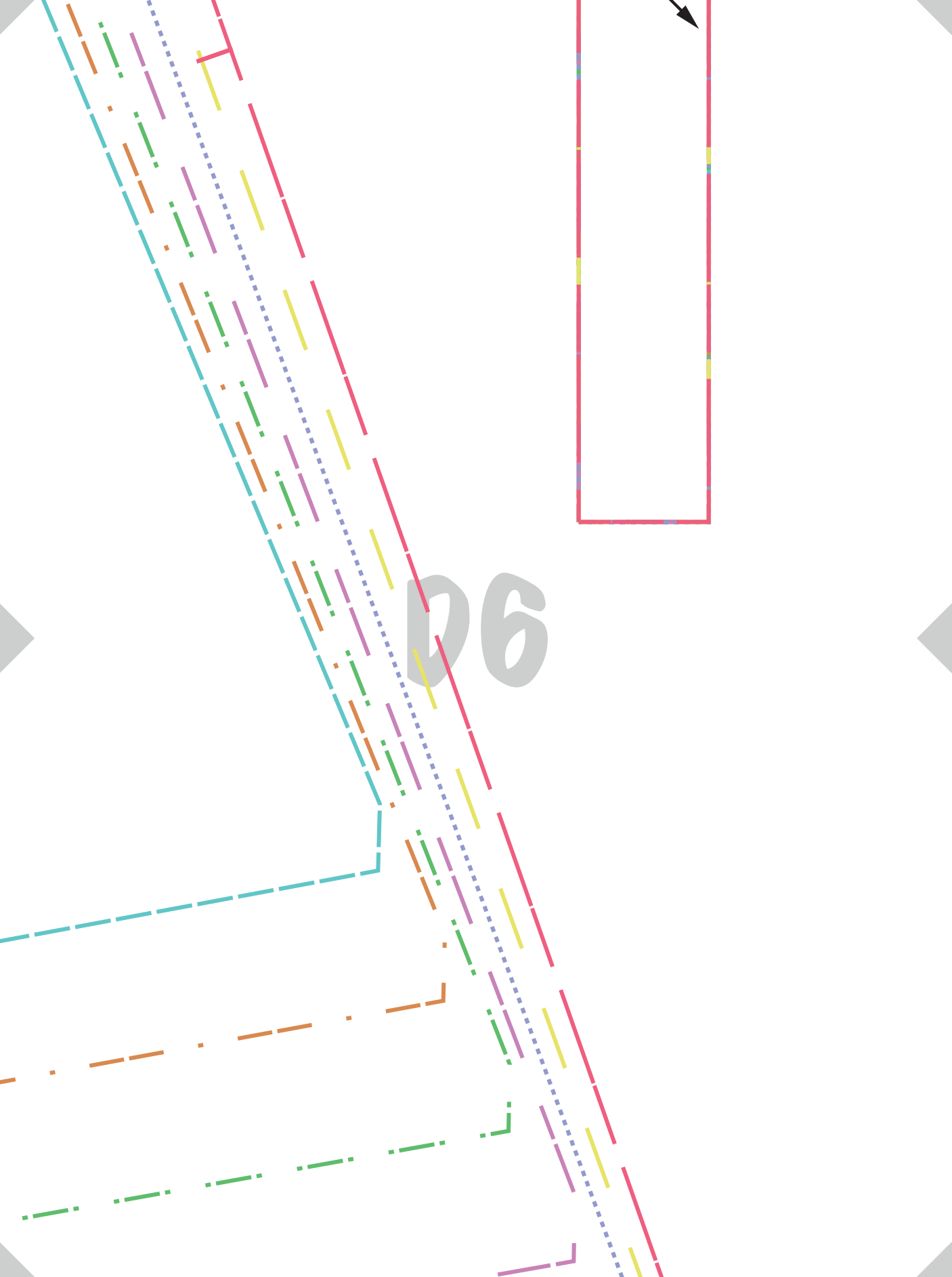
D4

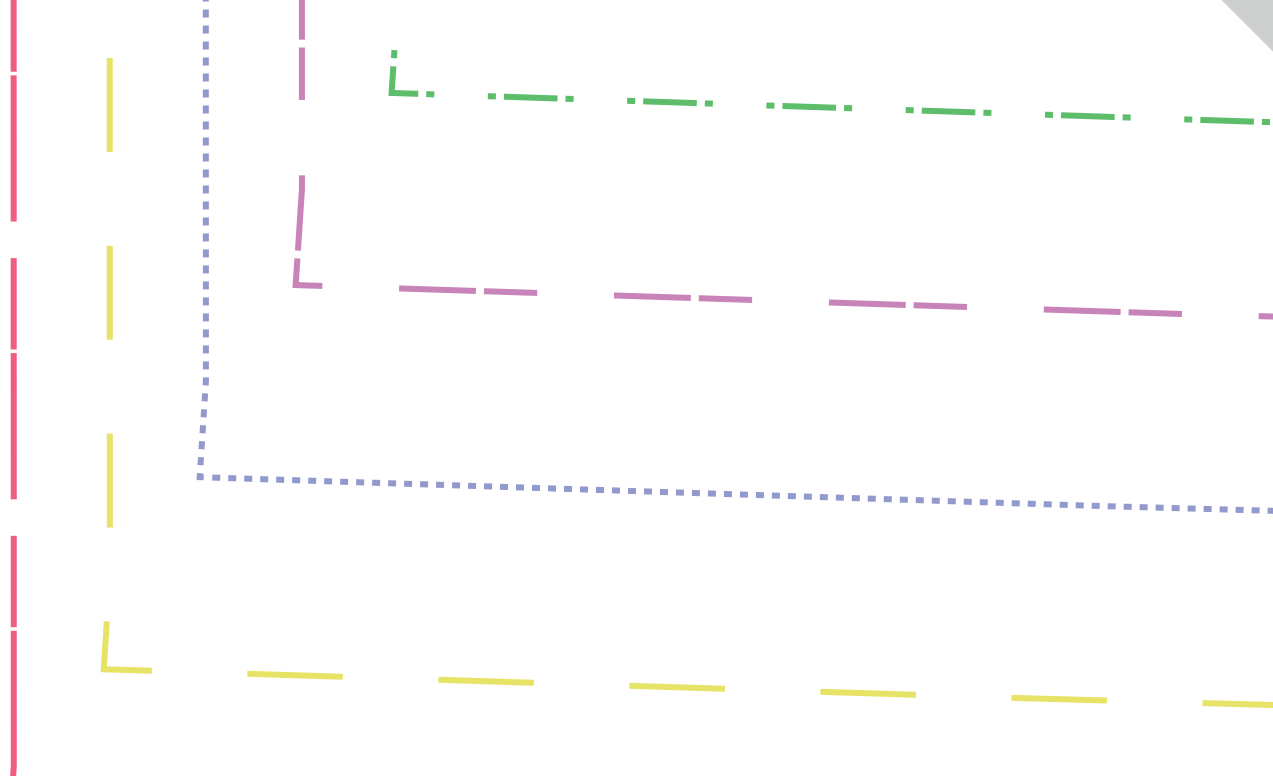


RT

D5







El





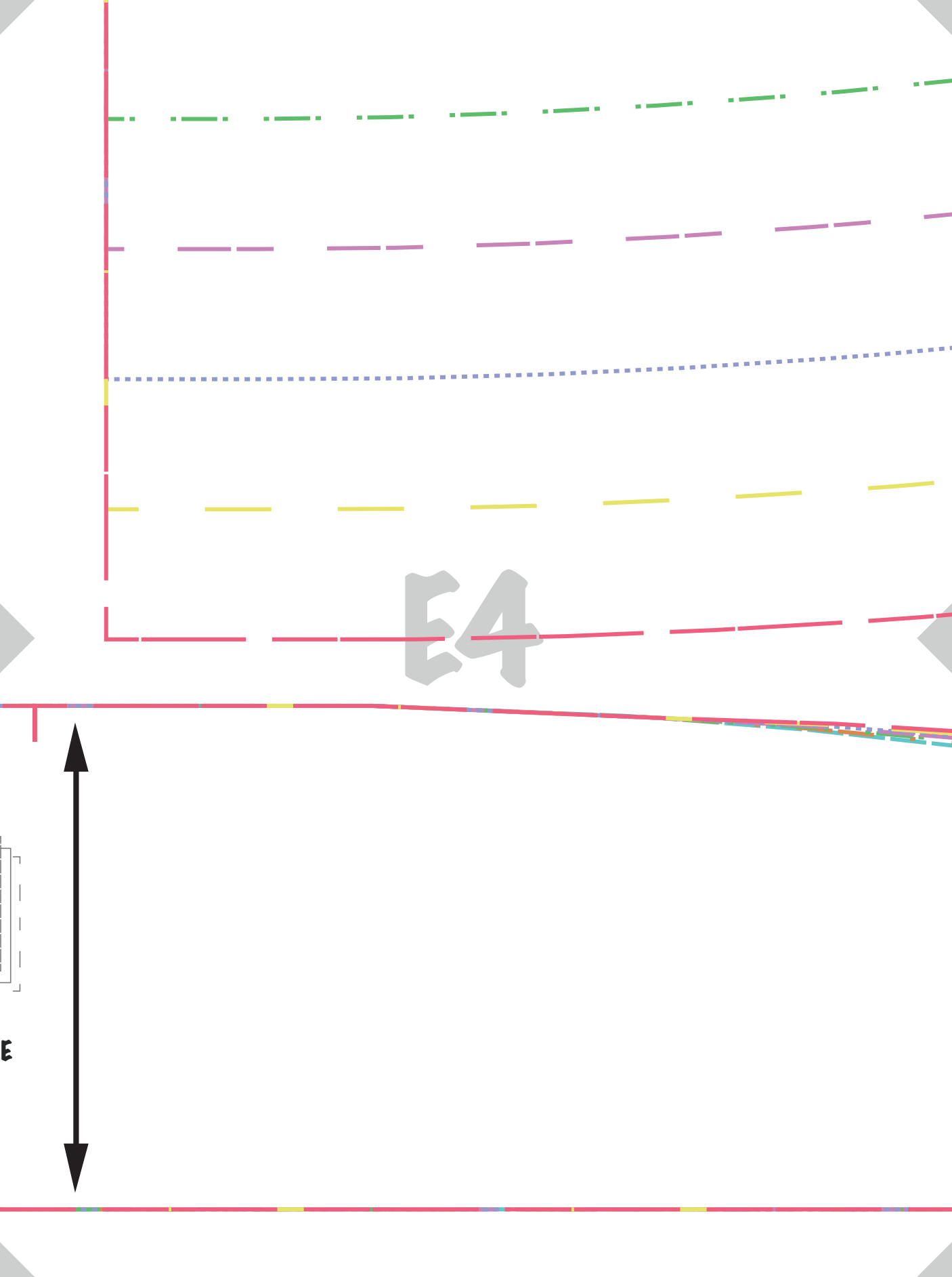
The background of the page is white with several horizontal dashed lines in different colors: green, purple, blue, yellow, and red. A large, light gray watermark 'E2' is centered on the page. At the bottom, there is a series of parallel dashed lines in red, yellow, green, and blue, and a solid red line at the very bottom.

E2

E3

**patterns
for less**

**E
RUFFLE SLEEVE
CUT 2**





The background features several sets of parallel dashed lines in various colors: green, purple, blue, yellow, red, and teal. These lines are arranged in a way that creates a sense of depth and movement, with some lines appearing to recede into the distance. The text 'E5' is centered in the middle of the image, rendered in a large, bold, grey font. The overall aesthetic is modern and minimalist.

E5



E6