

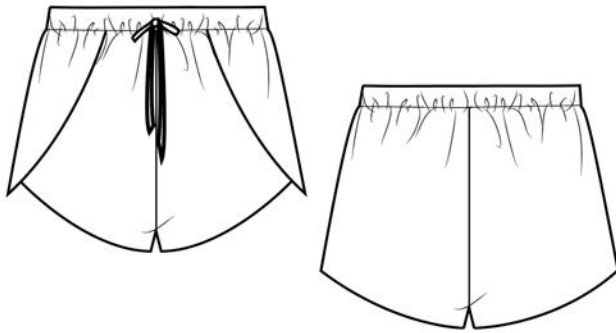
Summer Shorts



**INSTRUCTION
BOOKLET**

Table of Contents

3	What do I need to start sewing?
4	Printing instructions
6	Size chart
7	Patterns
8	Sewing instructions
13	Glossary



COPYRIGHT - All rights reserved.
© 2023 Patterns For Less

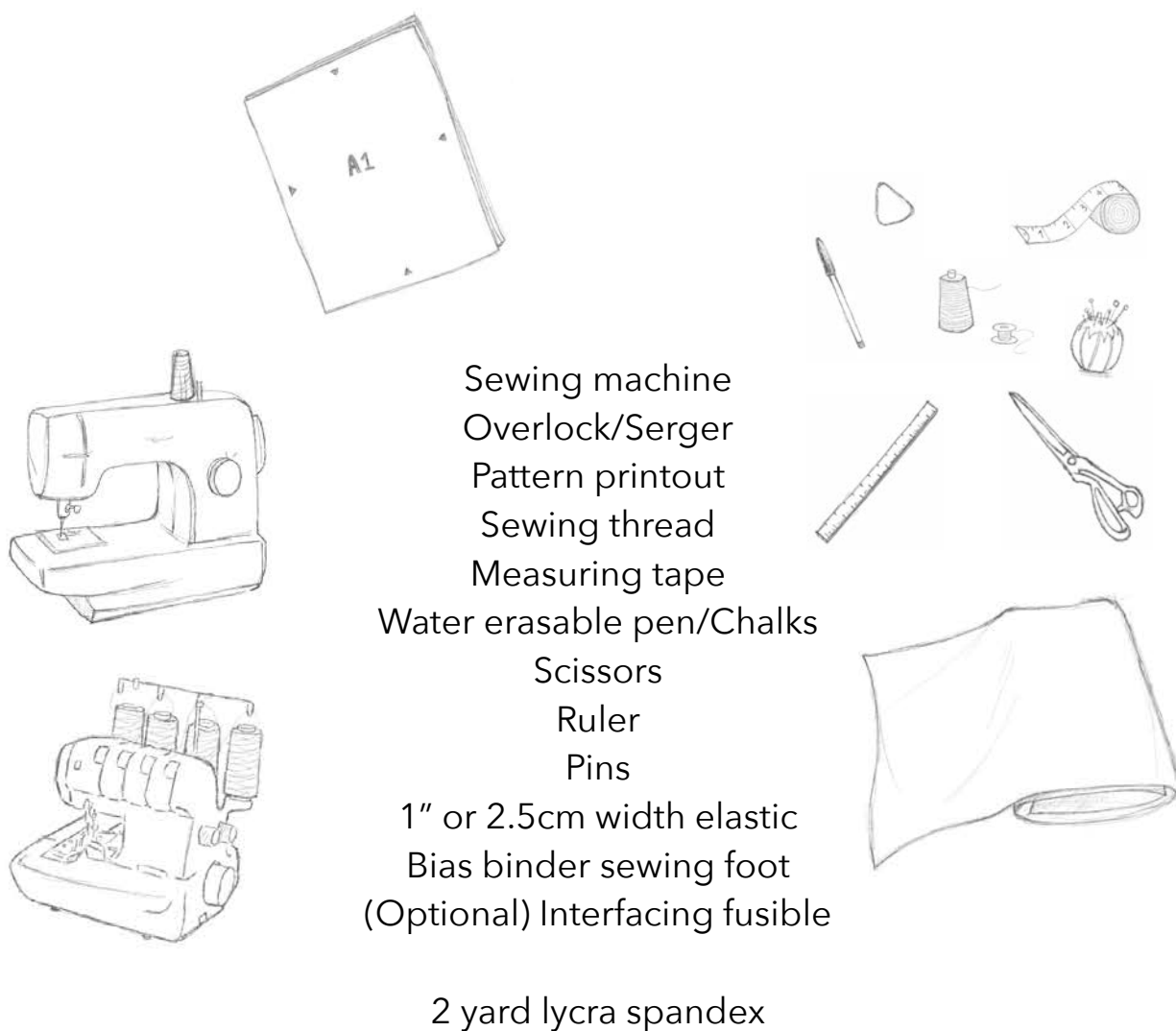
Written permission is required to copy and/or distribute copies of this document, whether or not it is for profit. Photocopying, digitizing or copying this document to share is strictly prohibited.

Help support the development of Patterns For Less sewing patterns by checking out the new arrivals.

For inquiries, questions, drop me a message on
IG: PatternsForLess
info@patternsforless.com

Sign up to my email list for discounts and exciting store updates!
PatternsForLess.com

What do I need to start sewing?



Fabric Recommendations: cotton jersey, bamboo jersey, rayon, modal, elastane, lycra, jersey.

Printing Instructions

Let's print out the pattern!

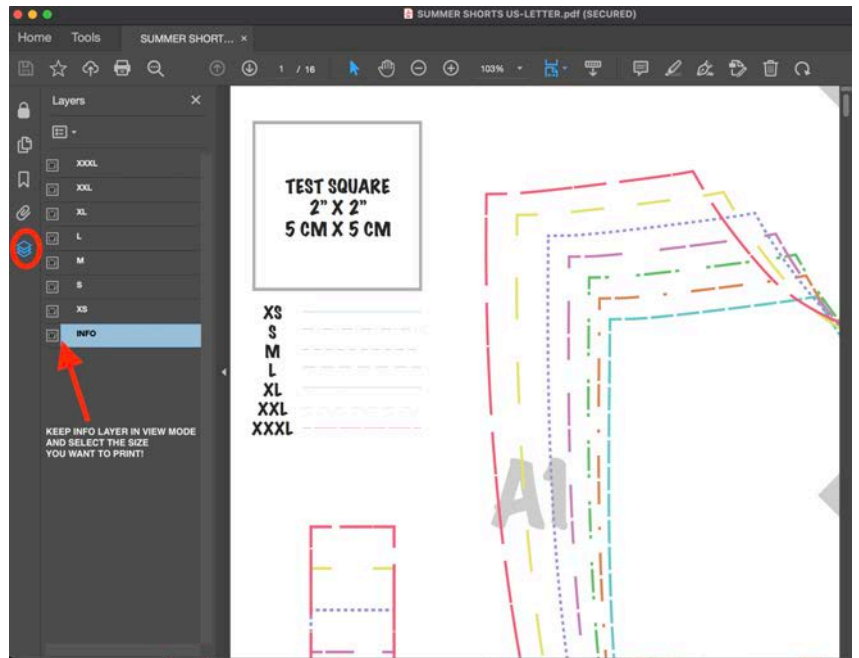
The sewing pattern comes with 3 different printing options! The US Letter and A4 print is a tile version PDF that you can print out at home. The A0 version is used by a printshop to print on a single sheet of paper and saves time taping the separate pages together.

Additionally, you can use view mode to only select/print the size you are working on. Each pattern file is designed with layers of different sizes. There is an option to print only your size or all sizes based on your preference. Open the file in Adobe Acrobat and keep in legend layer.

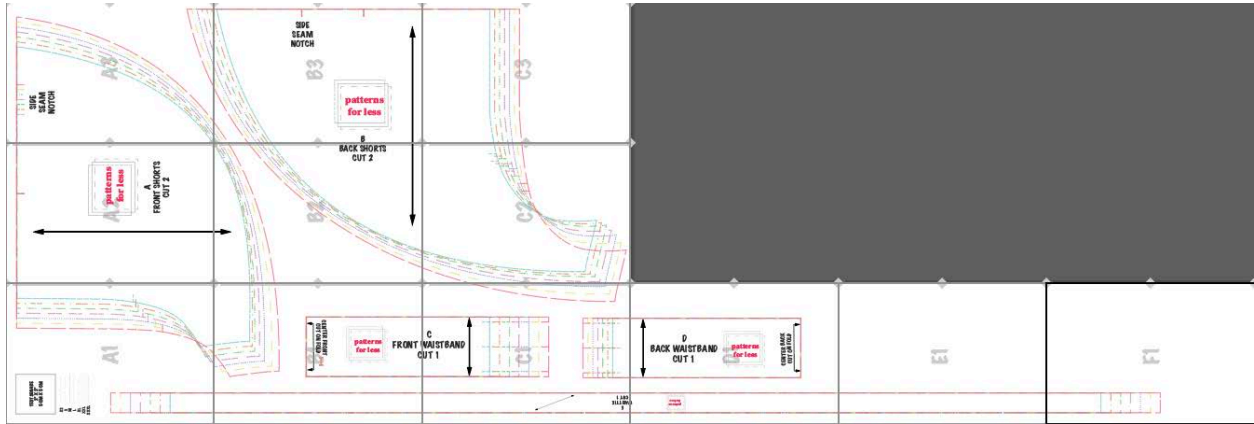
If you print at home, then you need to trim each sheet by cutting off the top and excess margin. Tape each page together by row, and then attach the rows together. Use the diamond marks to align everything!

Always make sure to print on 100% scale.
(Do not 'fit to page' or reduce the size!)

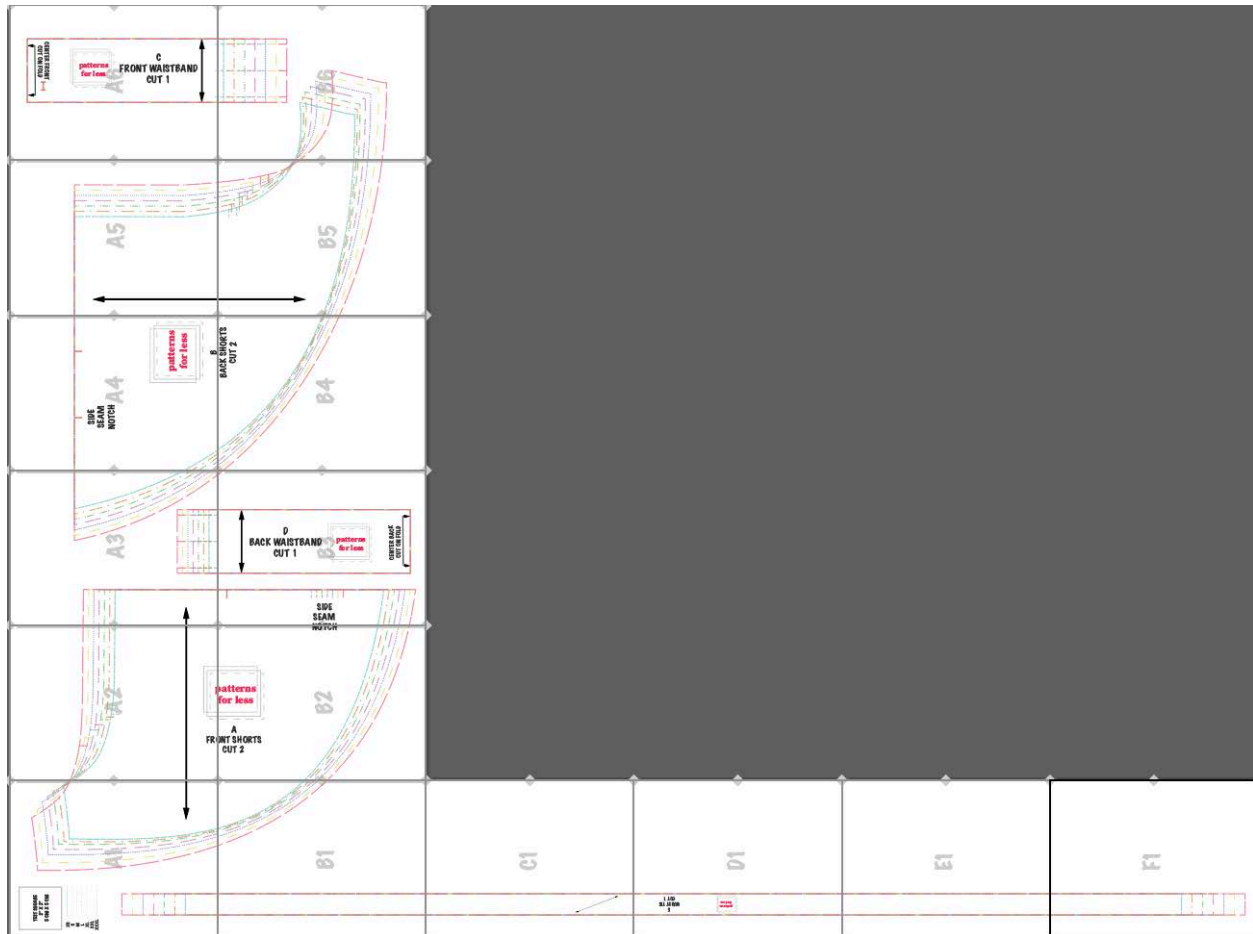
There is a test square on the first page of the pattern.
Use as a scale to check if the dimensions are 5x5cm and/or 2x2".



A4



US Letter



Size Chart

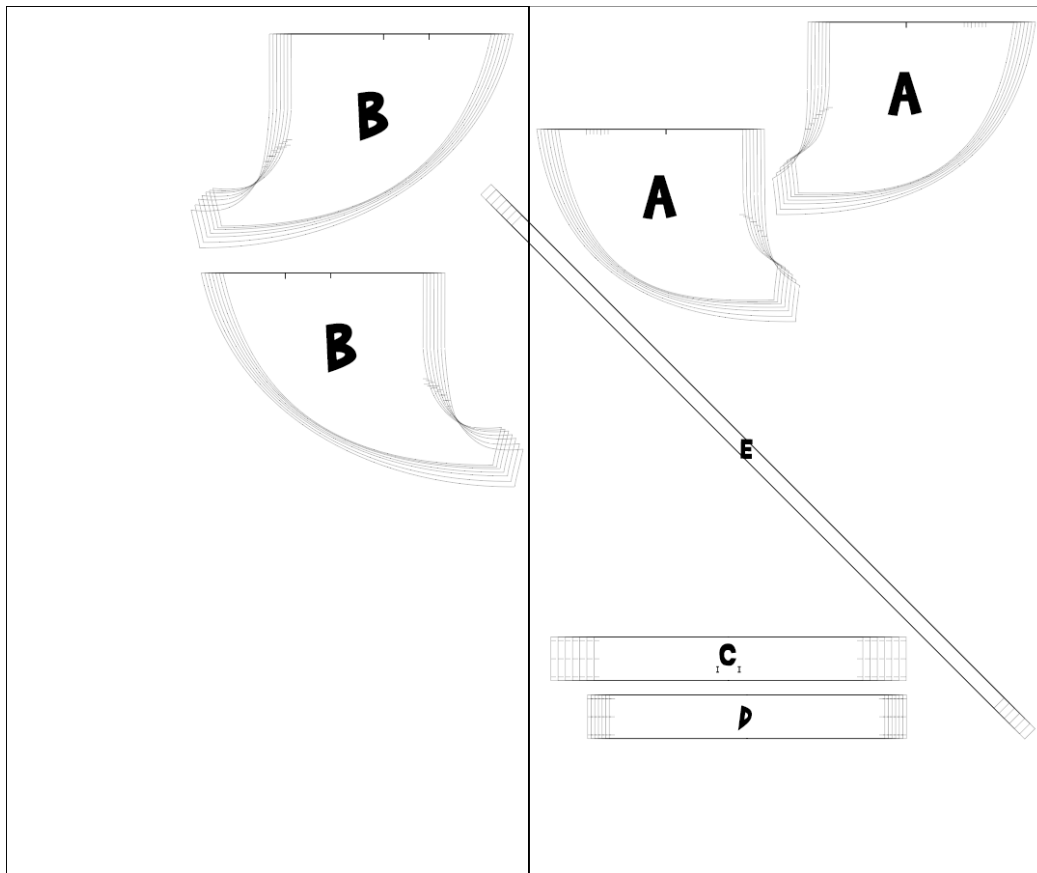
inches

SIZE	BUST	WAIST	HIP
XS	30	25	36
S	33	27	38
M	36	29	40
L	39	31	42
XL	41	33	44
XXL	44	35	46
XXXL	47	37	48

centimeters

SIZE	BUST	WAIST	HIP
XS	76	63	91
S	84	68	96
M	91	74	102
L	99	79	107
XL	104	84	112
XXL	112	89	117
XXXL	119	94	122

Patterns

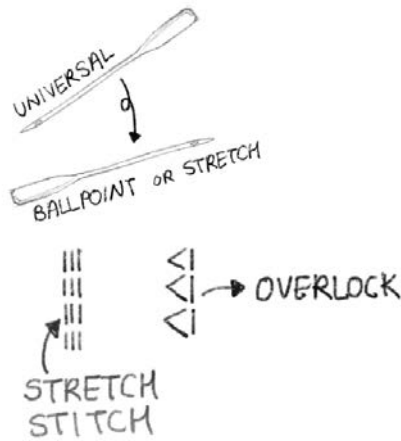
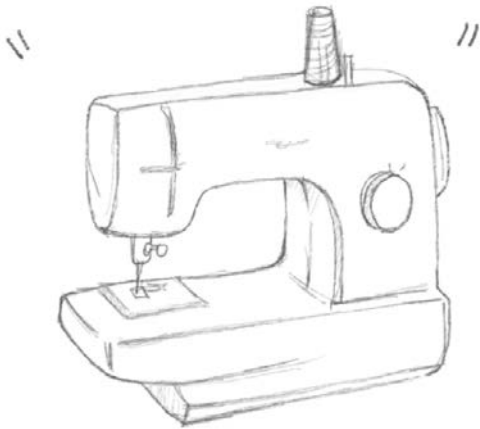


Summer shorts pattern pieces include:

- A- Front Shorts, cut 2
- B- Back Shorts, cut 2
- C- Front Waistband, cut 1 on folded fabric
- D- Back Waistband, cut 1 on folded fabric
- E- Waist Tie, cut 1

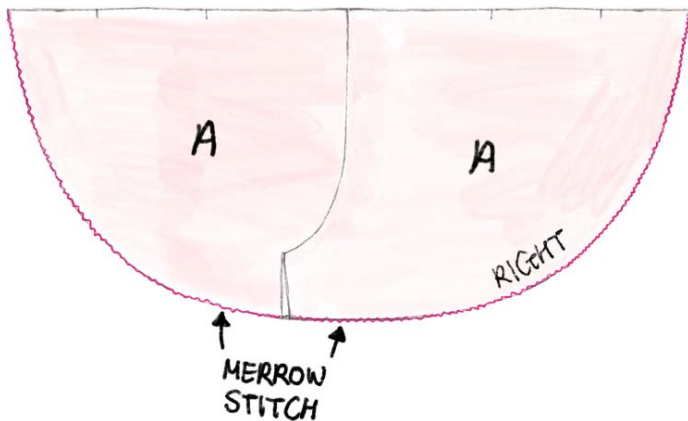
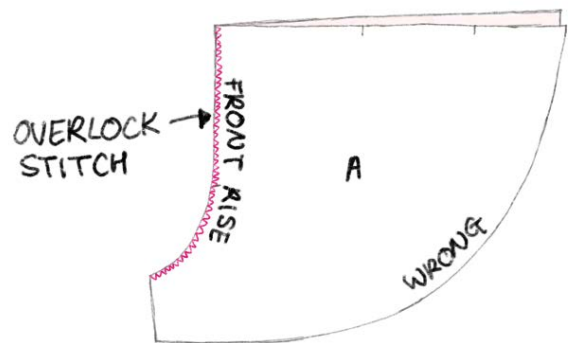
¼" or 0.6cm seam allowance is already included unless indicated on the pattern or instruction book.

Sewing Instructions



Step 1- Prepare your sewing machine by changing from regular sewing needle to ball point needle. Set the stitching to stretch stitch or overlock stitch mode.

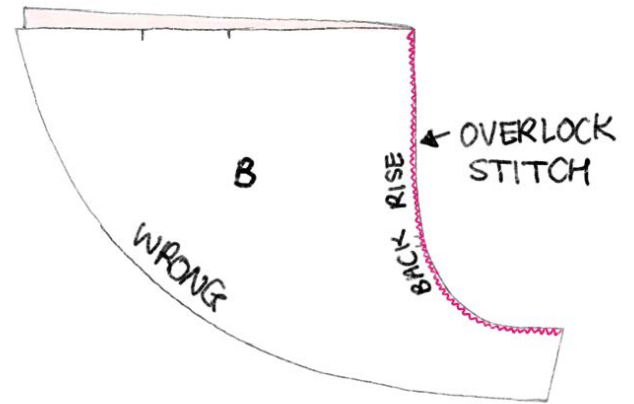
Step 2- Place both Front Shorts (A) pieces right side facing each other and overlock stitch $\frac{1}{4}$ " or 0.6cm width along the front rise.



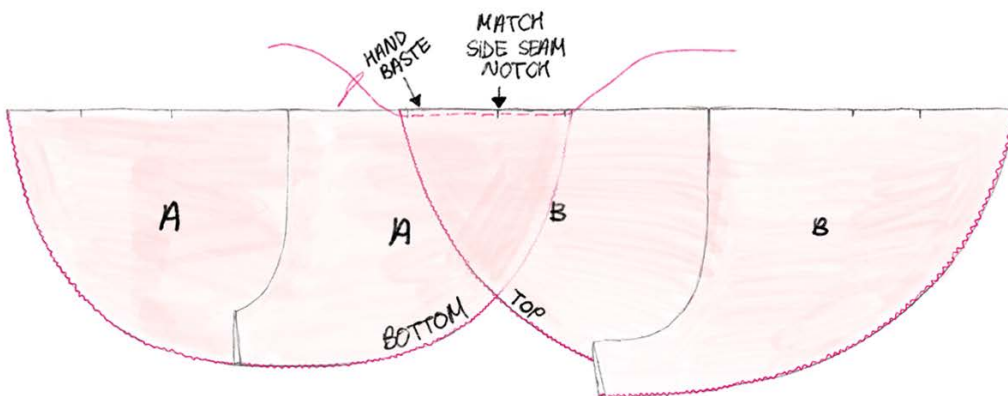
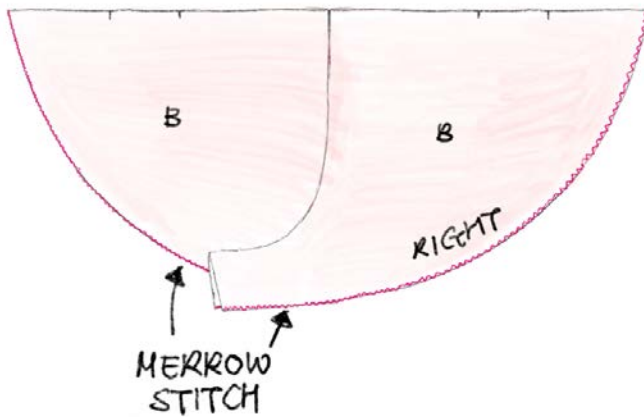
Step 3- Merrow stitch along the cut edges of Front Shorts (A).

SUMMER SHORTS

Step 4- Place both Back Shorts (B) pieces right side facing each other and overlock stitch $\frac{1}{4}$ " or 0.6cm width along the back rise.

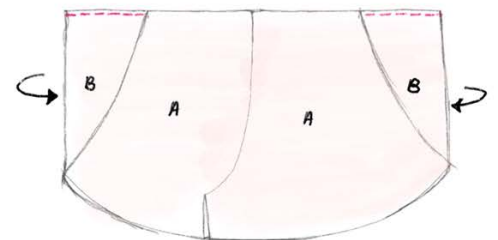


Step 5- Merrow stitch along the cut edges of Back Shorts (B).

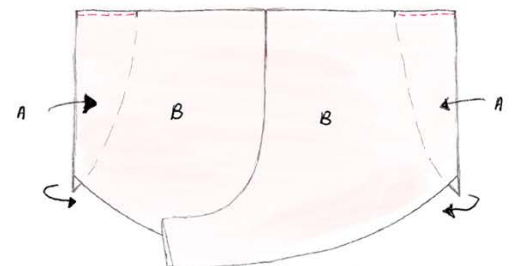


Step 6- Place the Front and Back Shorts (A & B) right sides facing each other. Ensure to overlap the side seam notches on top of each other and overlap of Front Shorts and Back Shorts ends on the notches. Hand baste the overlap sections.

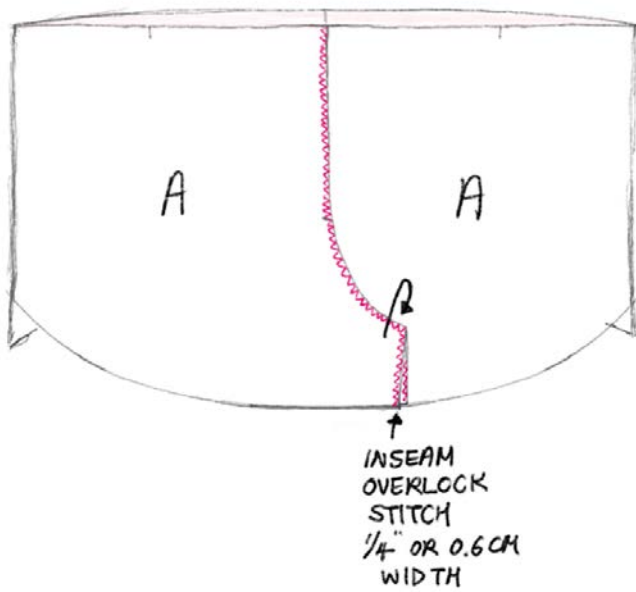
"FRONT VIEW"



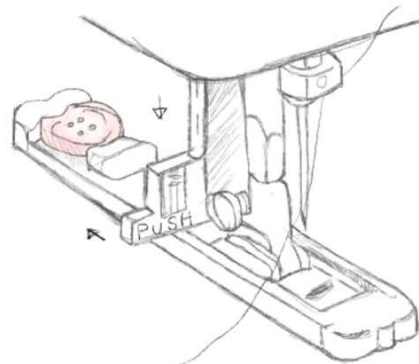
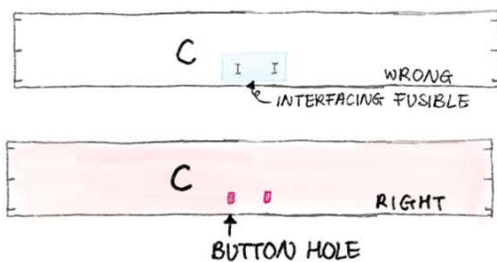
"BACK VIEW"



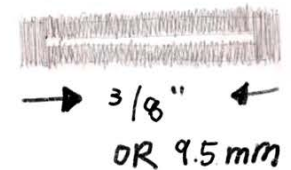
SUMMER SHORTS



Step 7- Close the inseam of Front and Back Shorts (A & B) with overlock stitch 1/4" or 0.6cm width.



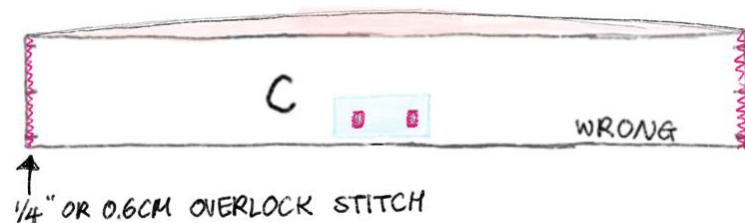
BUTTON HOLE x 2 PCS.



Step 8- Transfer the buttonhole position from the paper sewing pattern to the right side of the Front Waistband (C). Use buttonhole foot to sew buttonhole and carefully open the hole with seam ripper.

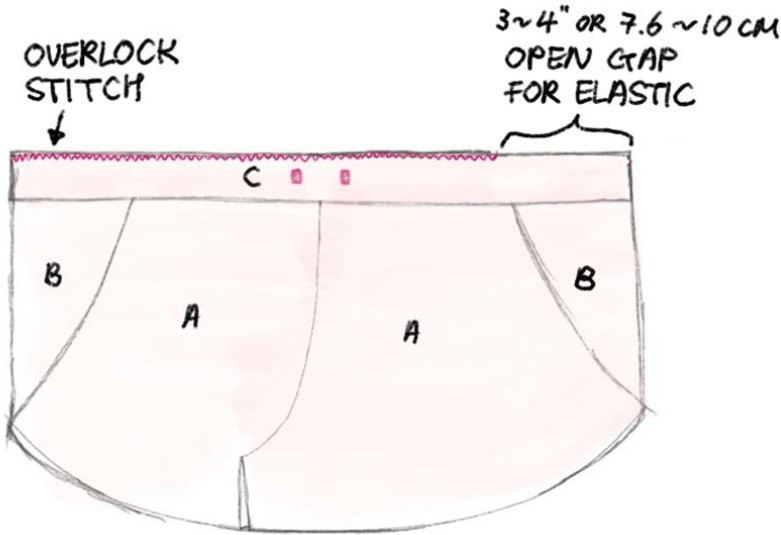
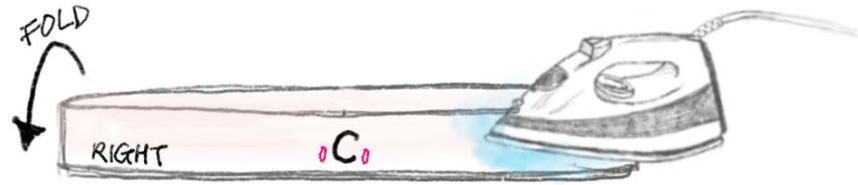
Note: If the knit fabric is too sheer or flimsy, add a small piece of fusible interfacing on the wrong side of the fabric when creating the buttonhole to prevent from ripping the fabric.

Step 9- Place the Front and Back Waistband (A & B) right side facing each other and close the side seam with 1/4" or 0.6cm width overlock stitch.

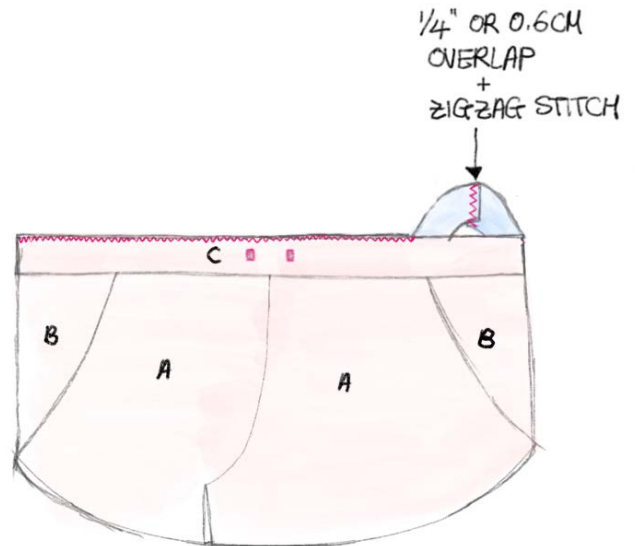


SUMMER SHORTS

Step 10- Fold the Front and Back Waistband (C & D) in half length wise wrong side facing each other.



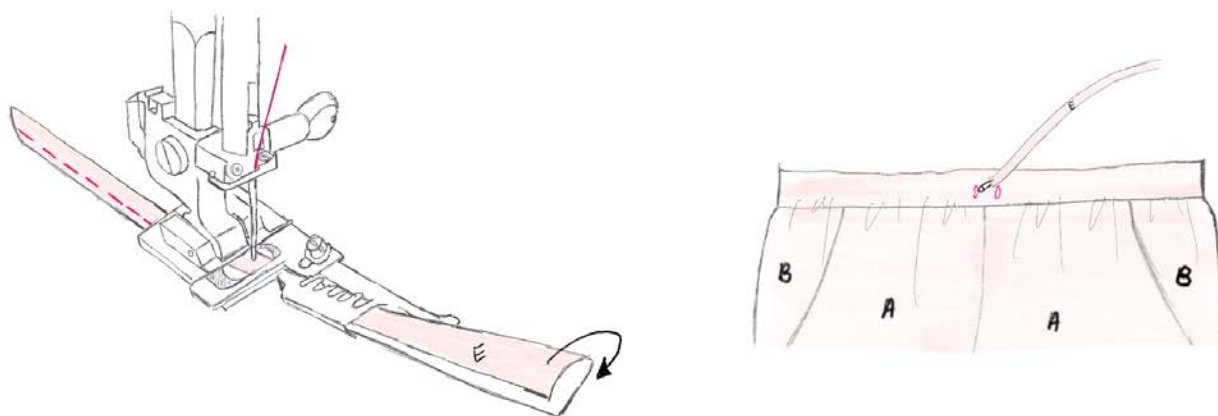
Step 11- Slide the Waistband through the waist opening of Front and Back Shorts (A & B) right sides together, then $\frac{1}{4}$ " or 0.6cm width overlock stitch with 3~4" or 7.6~10cm gap to insert the elastic band on one side.



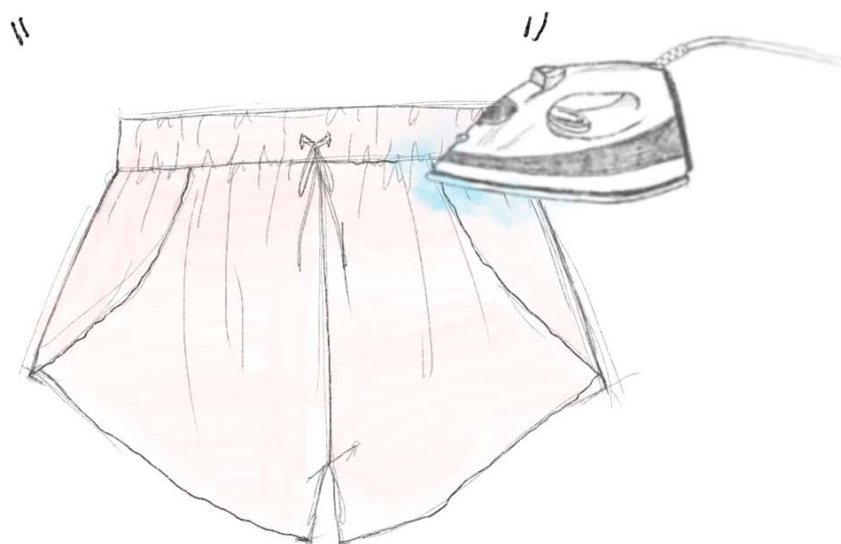
Step 12- Slide the 1" or 2.5cm width elastic band and meet the ends together at the other side. Overlap the elastic band $\frac{1}{4}$ " or 0.6cm and zigzag stitch to join. Close the waist opening by continuing the overlock stitch.

ELASTIC LENGTH

XS	24"	OR	60.9 CM
S	26"	OR	66 CM
M	28"	OR	71 CM
L	30"	OR	76.2 CM
XL	32"	OR	81.3 CM
XXL	34"	OR	86.4 CM
XXXL	36"	OR	91.4 CM



Step 13- Use bias binder sewing foot to create a long tie with Waist Tie (E). Use safety pin to slide the finished Waist Tie (E) through from one buttonhole opening to the other.

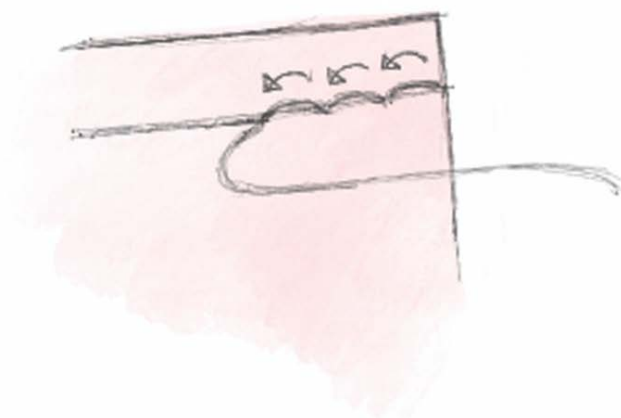


Step 14- Make a cute bow tie in the front and lightly press if needed to enjoy your summer shorts!

Note: If the knit fabric has elastic or synthetic fibers, use a pressing cloth and low heat setting instead of ironing directly on the fabric to prevent melting.

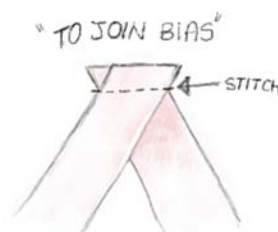
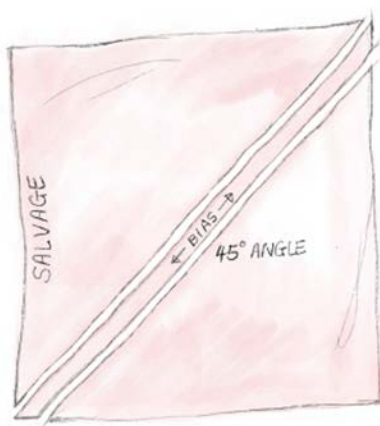
Sewing Glossary

Back Stitch



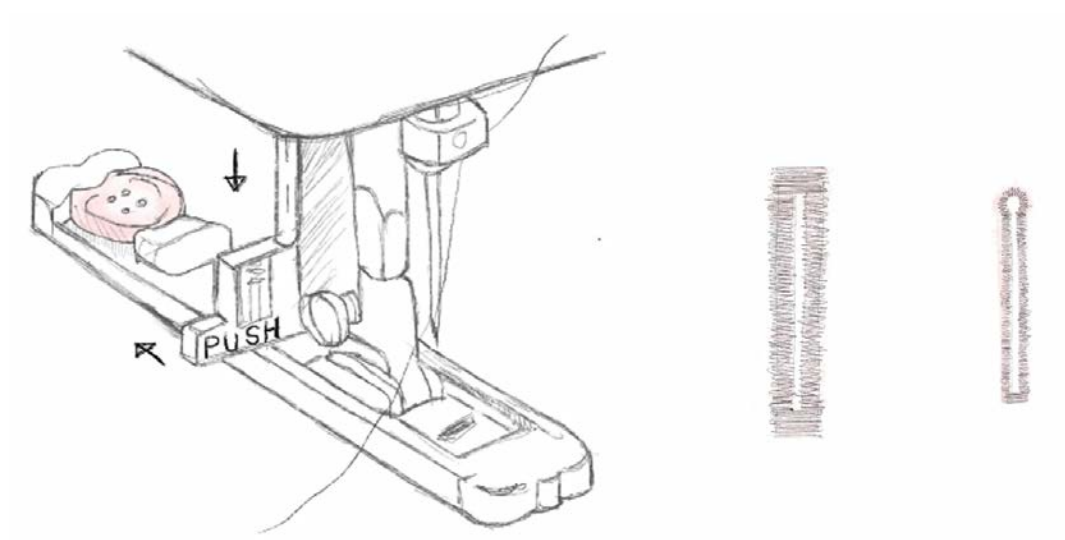
When you start a new seam or finish the seam, always backstitch by hitting the reverse button on your sewing machine. Back stitching consists of 3-4 stitches to lock the stitching and prevent unraveling.

Bias Tape



Bias tape is widely used in neckline, spaghetti strap, and other garment finishings. Prepare the bias strap by cutting in half diagonally to give a nice stretch. When needing to make a long continuous bias tape, sew the diagonal pieces together as long as you need.

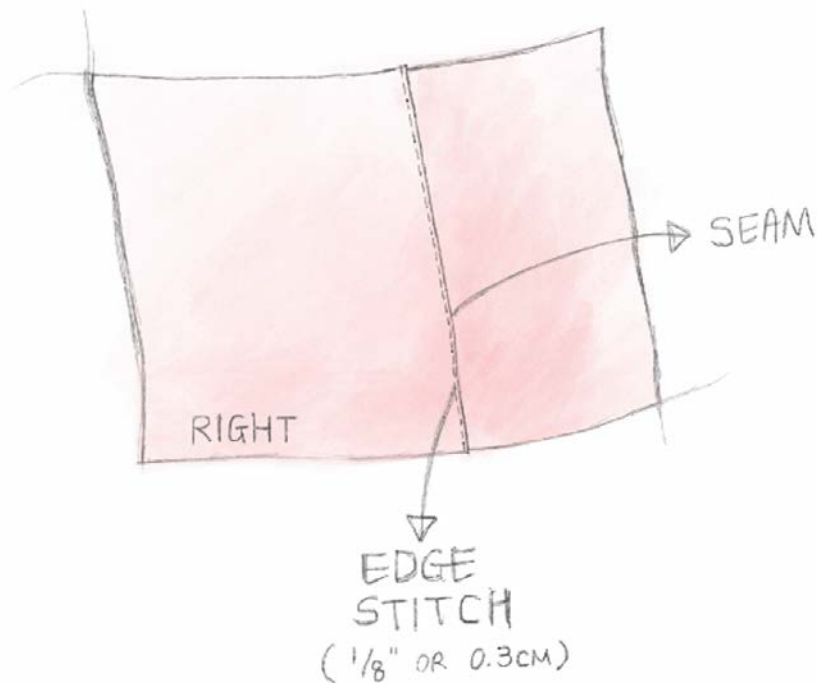
Buttonholes



There are various styles of buttonholes you can create with your sewing machine. For cleaner look, add interfacing and sew over the buttonhole more than once to create nice tight holes.

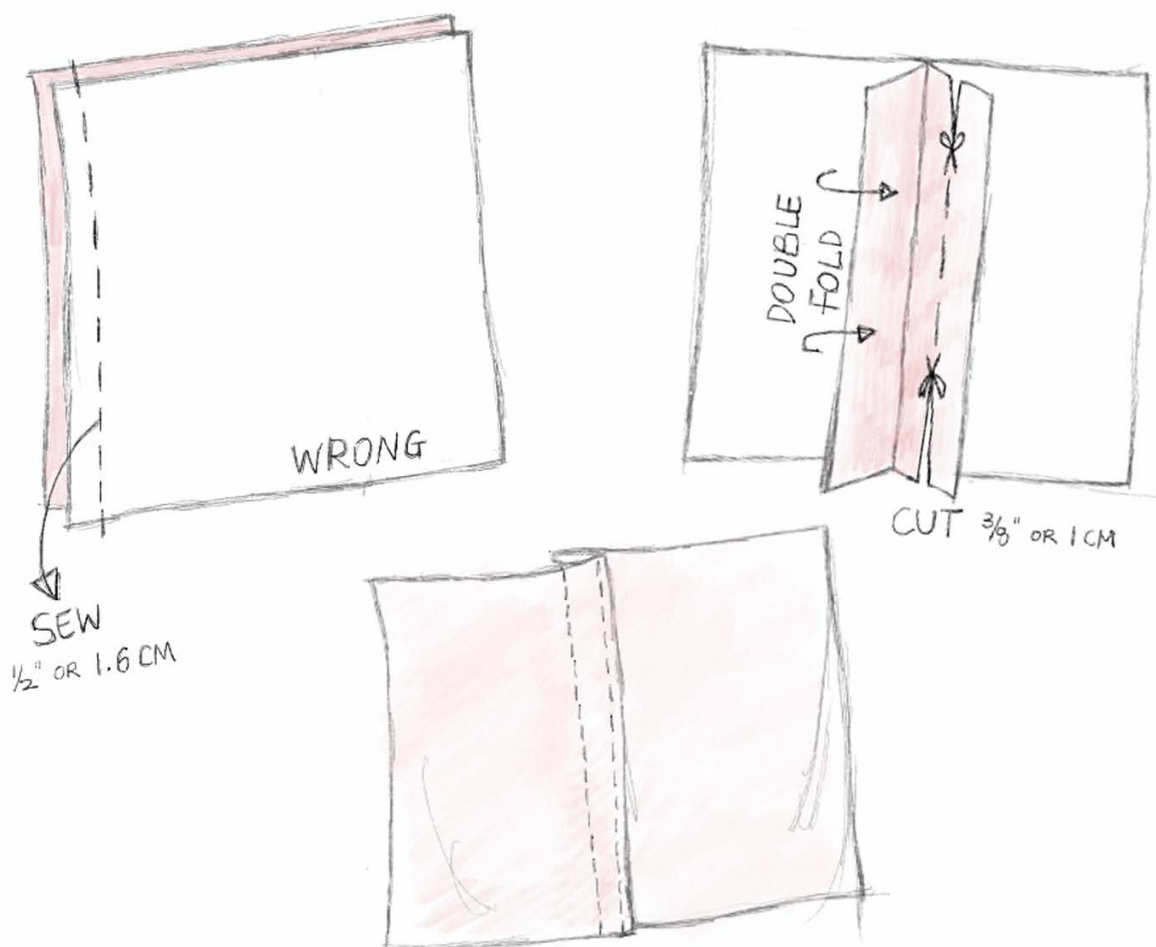
Use a buttonhole foot by inserting the button in the back of the foot, and snap the foot into place. Pull the button hole lever down, and select the buttonhole stitch on your machine. Press the pedal and stitch away, your machine will automatically go through the steps to make an accurate buttonhole.

Edge Stitch



Edge stitches are typically used to decorate or emphasize the original seam line. To achieve clean edge stitch, use a special footer to sew close to the edges without gliding off. Sew slowly to control the fabric.

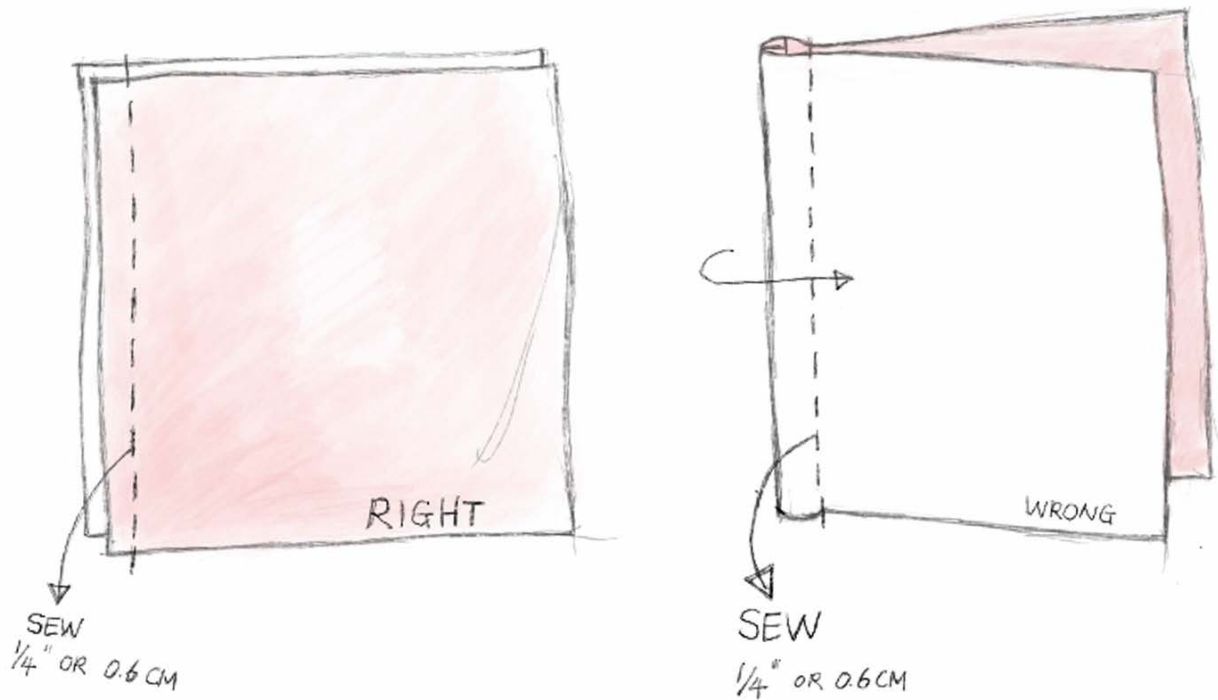
Flat Felled Seam



Flat felled seam or jeans seams is a great way to sew heavy duty fabric or bottoms to strengthen the garment.

Sew the fabric right sides facing each other. Trim one of the seam allowances in half. Turn the raw edge under and fold over to hide the half cut edge. Topstitch down the enclosed seam allowance.

French Seam



When sewing silk or chiffon with delicate fabrication, French seams are a great way to achieve an excellent quality finish.

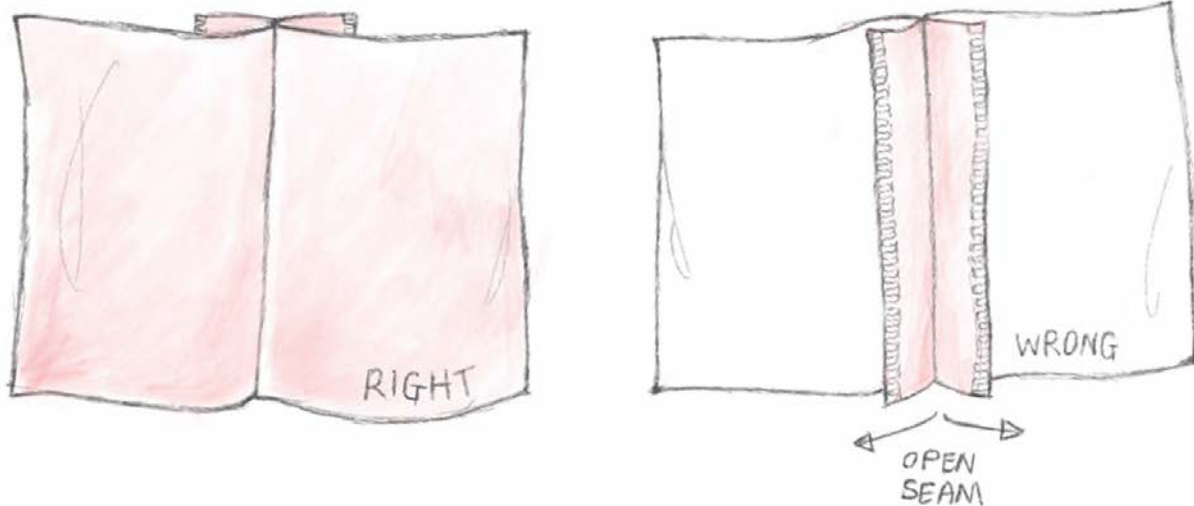
Place wrong sides of fabric facing each other and sew $\frac{1}{4}$ " or 0.6cm. Press the seam and fold the fabric along the seam line. Enclose the seam by stitching $\frac{1}{4}$ " or 0.6cm from the folded edge.

Hand Basting



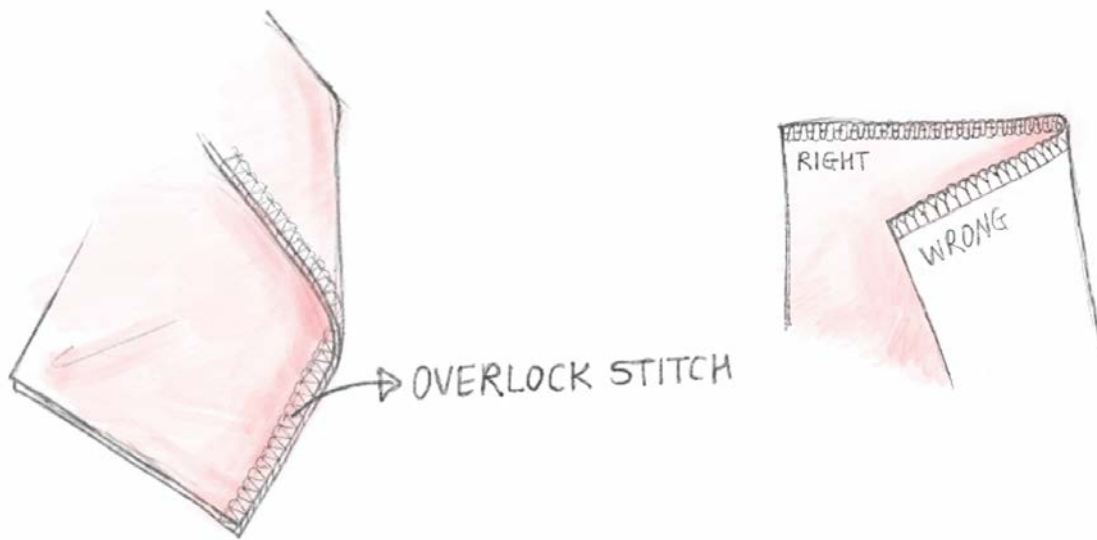
Basting or running stitches are simple hand stitches to use instead of pinning or gathering. Alternatively, you can increase the stitch length and loosen tension on your sewing machine to create a basting look.

Open Seam



Open seams are a technique used to make the seams clean and flat. It can be used for CF, CB, or side seams. Overlock both raw edges first, and then stitch the 2 pieces together to iron the seam open.

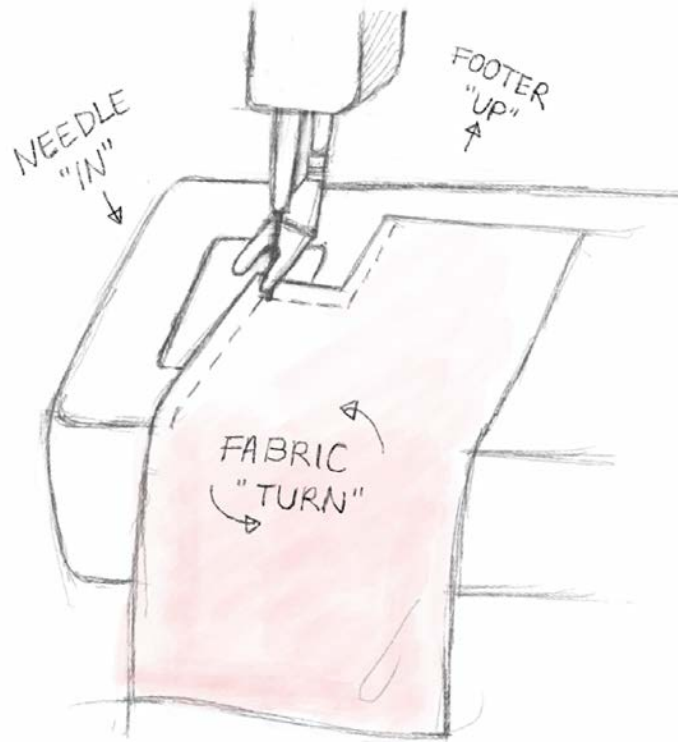
Overlock



Overlock stitches help to bind raw cut edges to prevent from fraying. This technique is mostly accomplished by overlock machine, serger, or your home sewing machine with overlock stitch setting.

Overlock machines have 2 to 3 needles and 2 top threads and lower threads to braid and stitch, which results in a variation of blanket stitch. The knife blade cuts the fabric edge to give a clean overlock stitch.

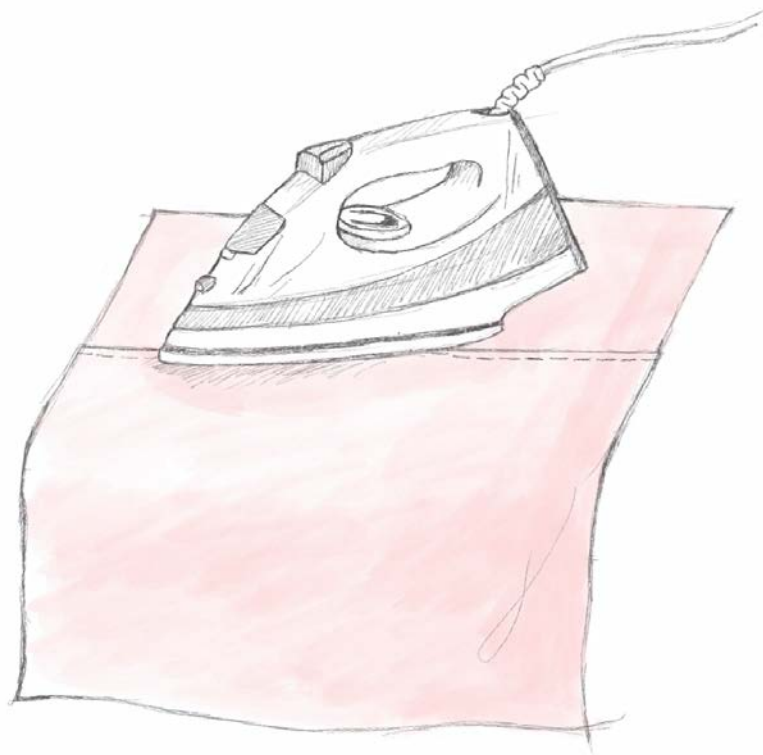
Pivoting



Use the pivoting method when sewing corners or at an angle such as pocket corners, tip of collars, v-neckline, etc.

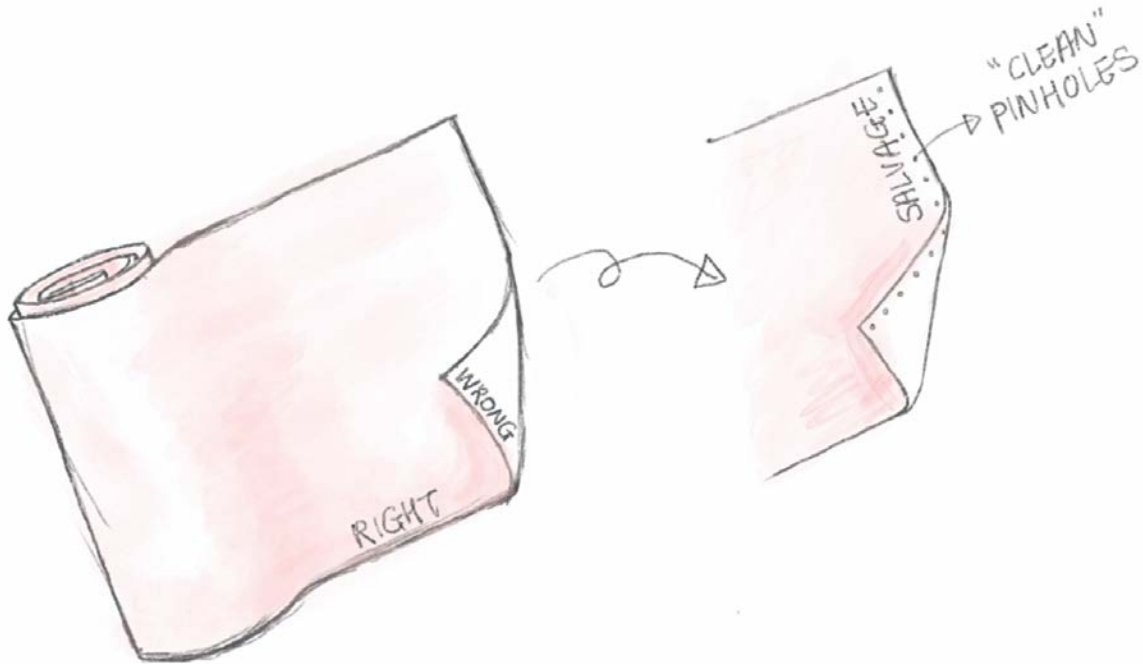
Execute the technique by leaving the needle in the fabric, lift the footer, and then turn the fabric as much as you need. Continue to sew by lowering the footer again, then stitch in the new direction.

Pressing



Steam and iron with pressure after every stitch you make in the garment. Pressing helps to relax the threads and finish the seams cleanly. Be aware to avoid extreme steam on natural fabrics such as cotton and linen due to the risk in shrinkage.

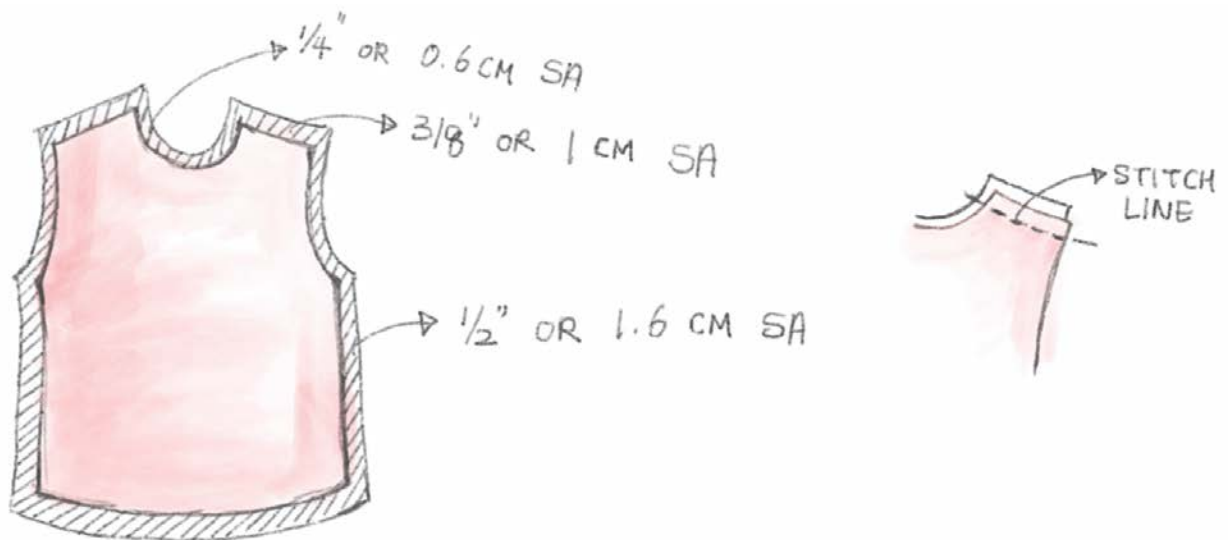
Right side - Wrong side



All fabrics have a right side and wrong side. The right side is mostly worn visibly to the outside whereas the wrong side should be on the inside of the garment. Some fabrics are easy to identify the right or wrong side by sheen or texture, but some might look identical both right and wrong side.

To find out the right and wrong side of the fabric, look for little pinholes along the selvage. The clean side of the holes is the right side.

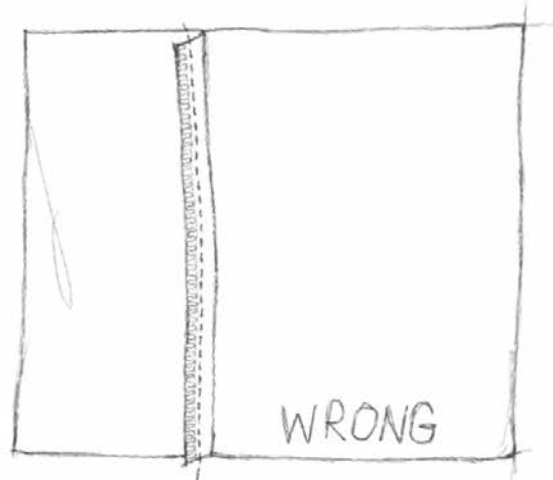
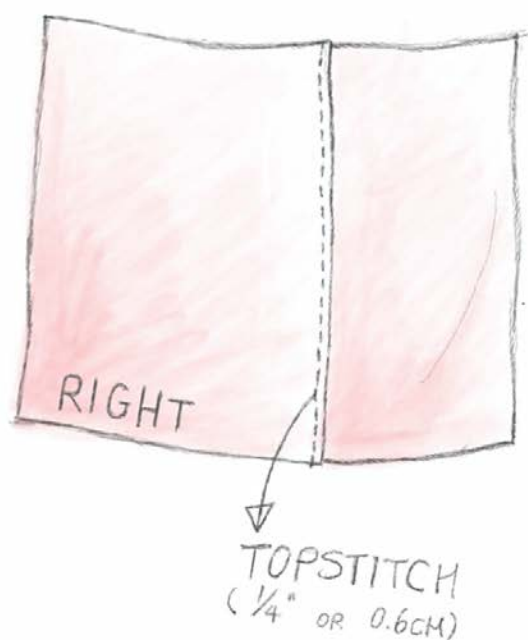
Seam Allowance



The seam allowance or SA is the extra fabric next to the stitch line all around each pattern piece. The additional space allows us to sew everything together.

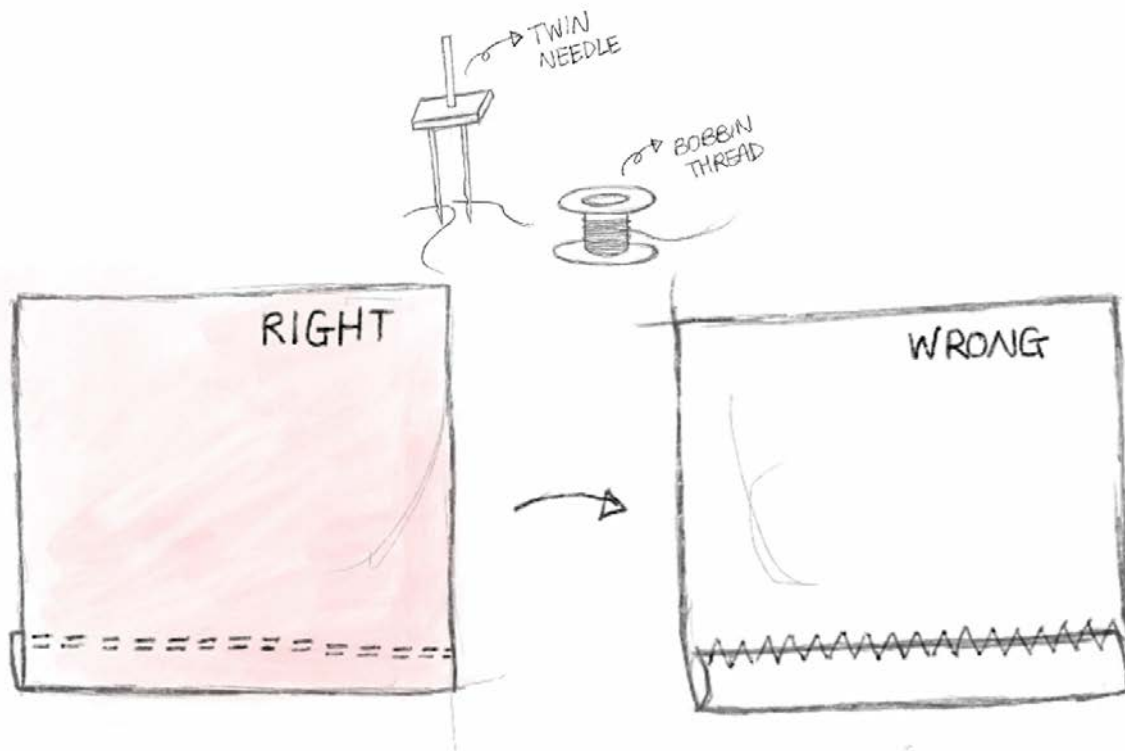
Depending on the seams and styles, the seam allowance is usually ($\frac{1}{4}"$, $\frac{3}{8}"$, $\frac{1}{2}"$) or (.6cm, 1cm or 1.2cm) width. Always refer to the pattern and instruction booklet for accurate seam allowance amount.

Topstitch



The purpose of top stitches are to add strength to the garment. Iron the seam allowance to the side. Straight stitch $\frac{1}{8}$ " or 0.3cm, or $\frac{1}{4}$ " or 0.6cm away from the original seam to sew the right side and seam allowance together.

Twin Needle



Twin needles are used in knit casual or sportswear for clean finishing without needing a double fold hemming method. The 2 top threads and 1 bobbin thread create parallel topstitch on the right side of the fabric and zigzag stitch on the wrong side of the fabric.