








TEST SQUARE
2" X 2"
5 CM X 5 CM

XS	
S	
M	
L	
XL	
XXL	
XXXL	

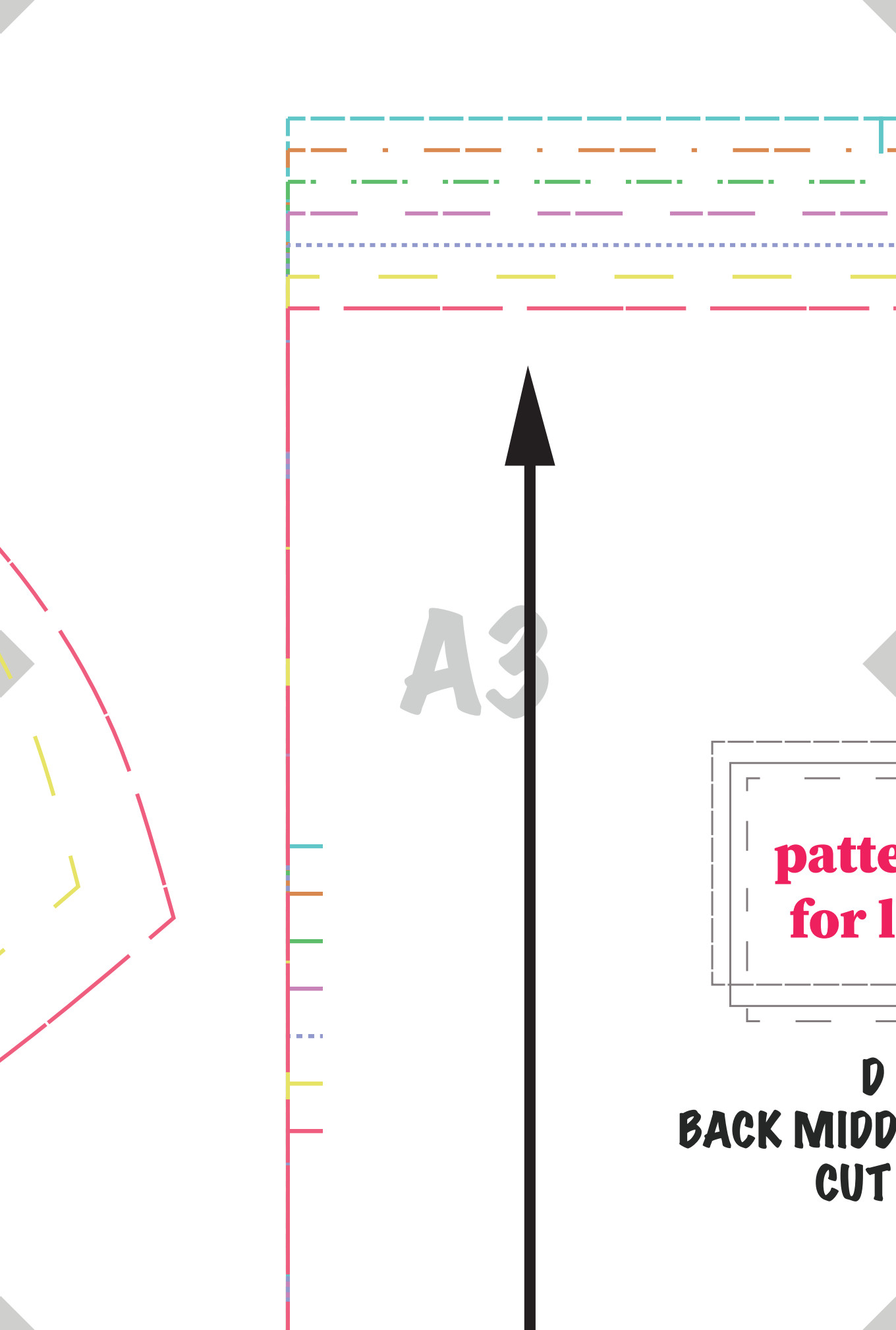
A1



The background of the page is a light gray with a large, faint 'A2' watermark in the center. Overlaid on this are several sets of curved lines in different colors and styles: red (solid), yellow (solid), purple (solid), green (dashed), orange (dashed), blue (dotted), and teal (dash-dot). These lines curve from the top left towards the bottom right. In the top left corner, there is a white rectangular box with a dashed border. Inside this box, the text 'patterns for less' is written in a bold, red, sans-serif font.

**patterns
for less**

**A
FRONT TOP
CUT 4**



A3

patte
for l

D
BACK MIDD
CUT



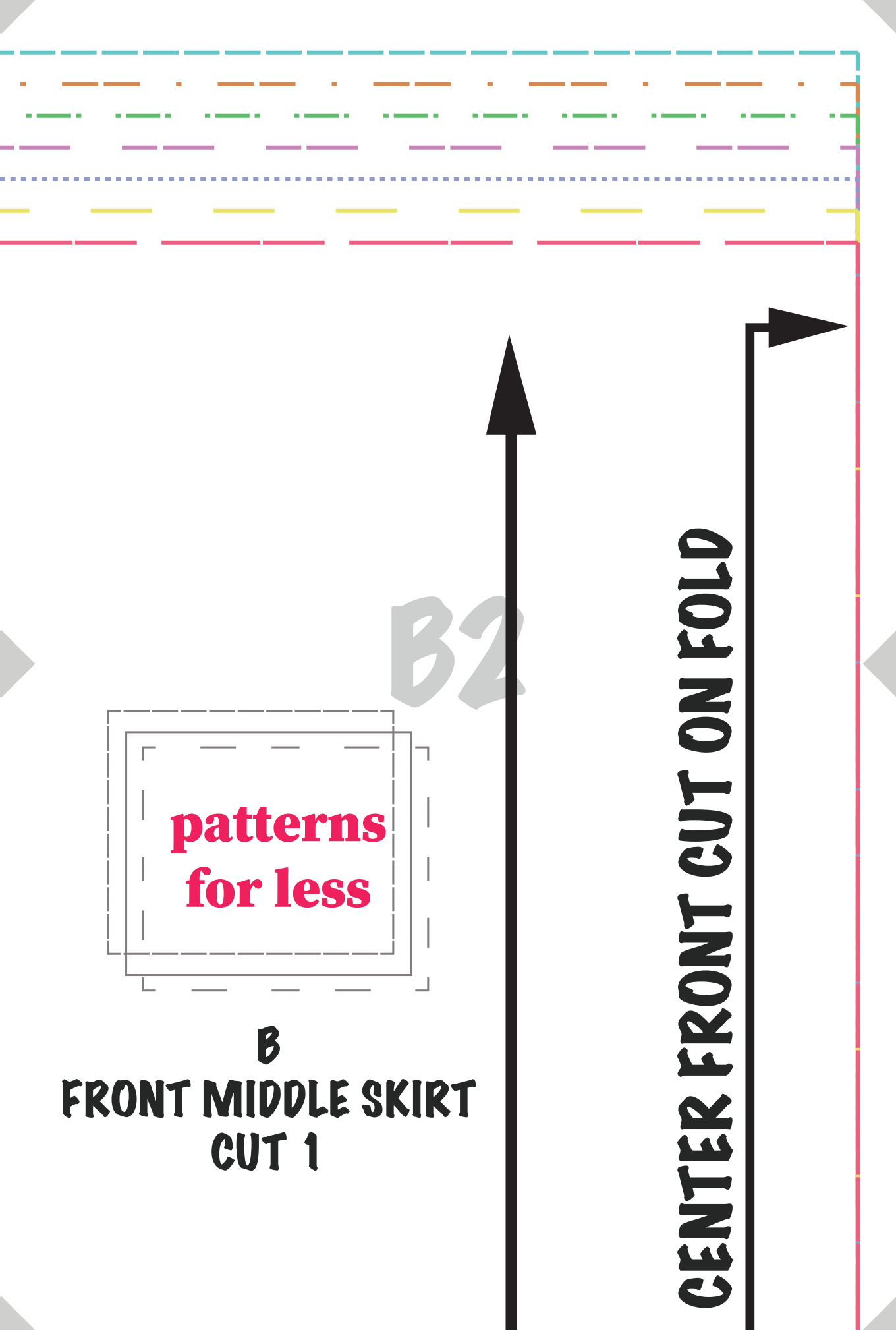
A4

Patterns
ess

LE SKIRT
2

A5

B1



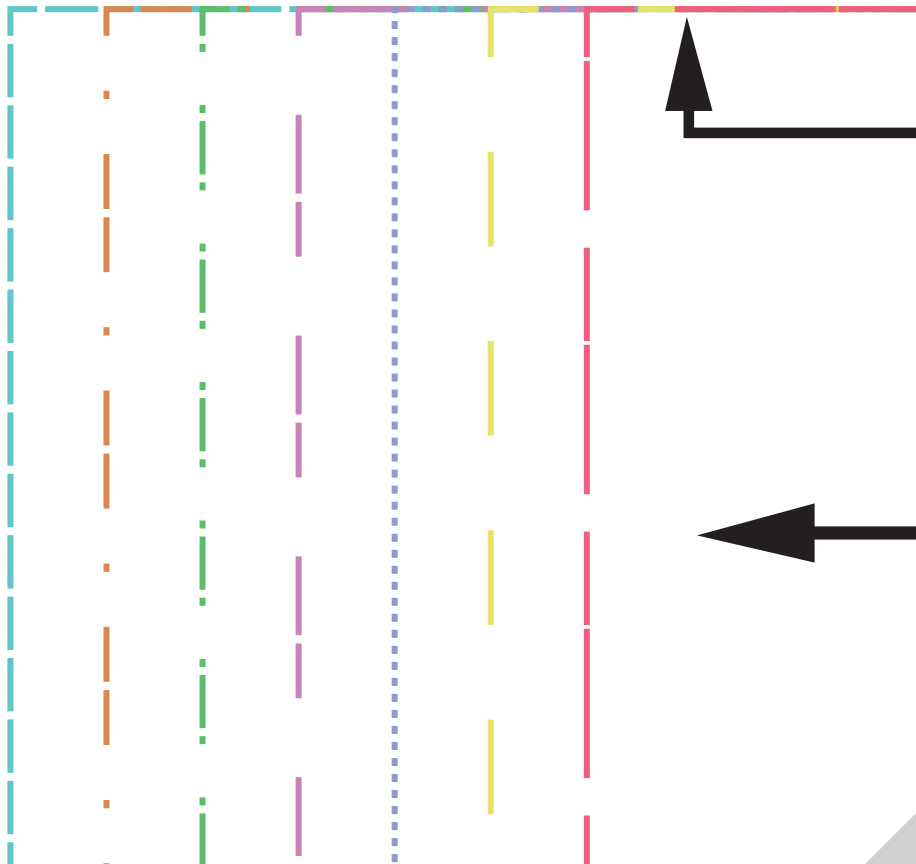
**patterns
for less**

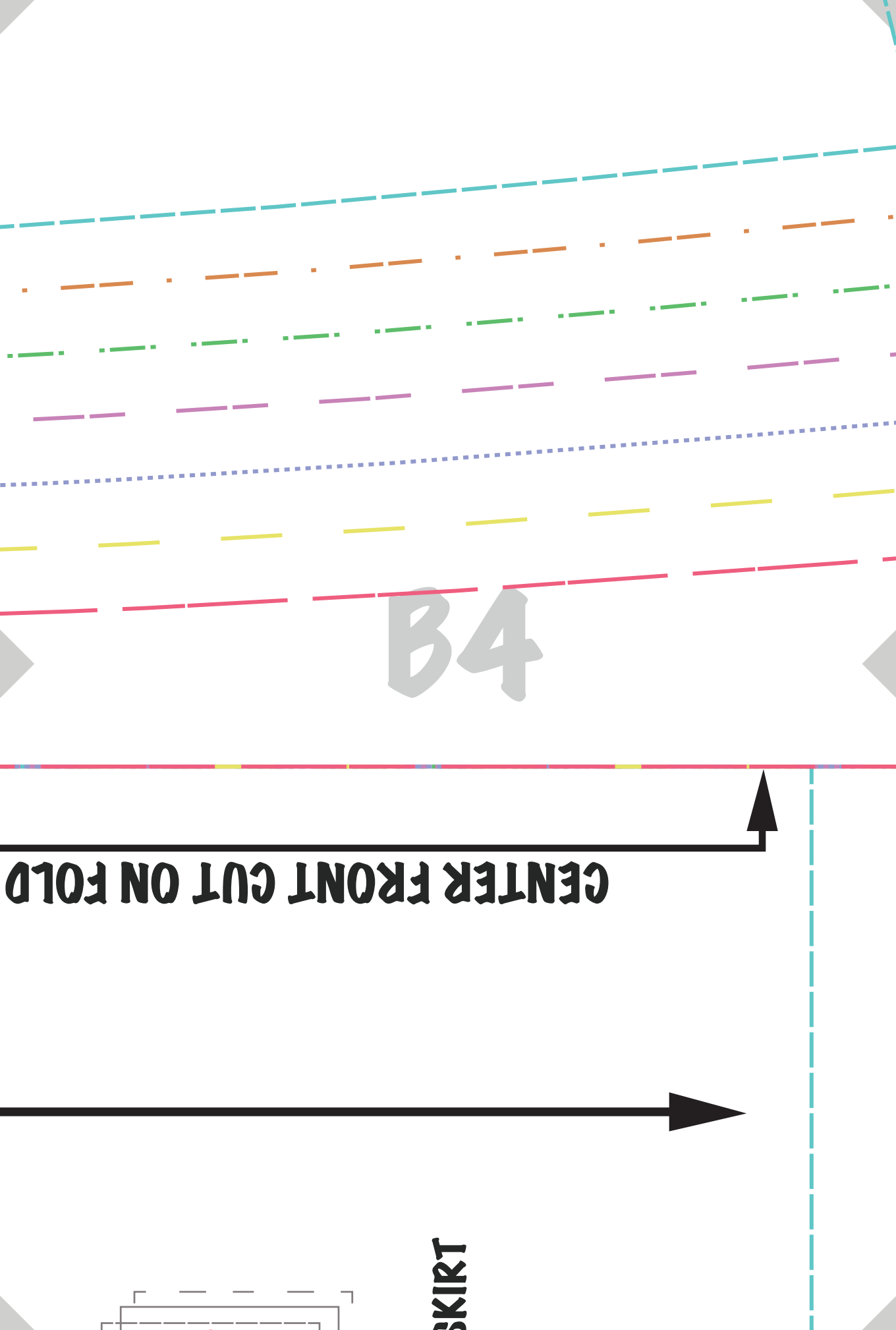
**B
FRONT MIDDLE SKIRT
CUT 1**

CENTER FRONT CUT ON FOLD



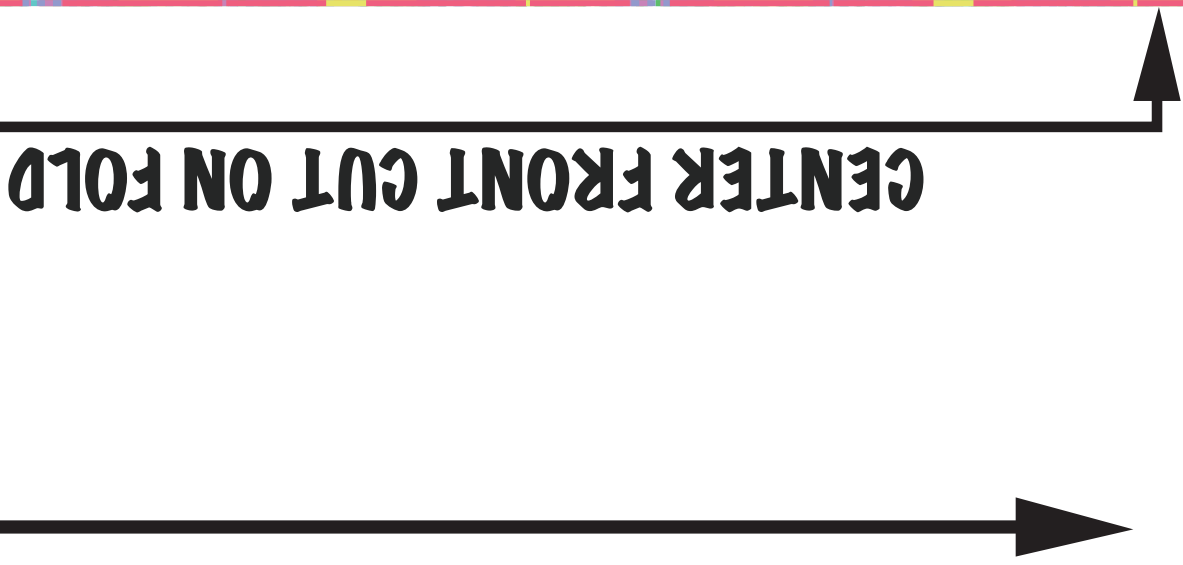
B3





B4

CENTER FRONT CUT ON FOLD

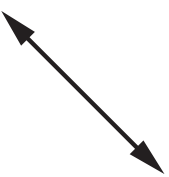


SKIRT

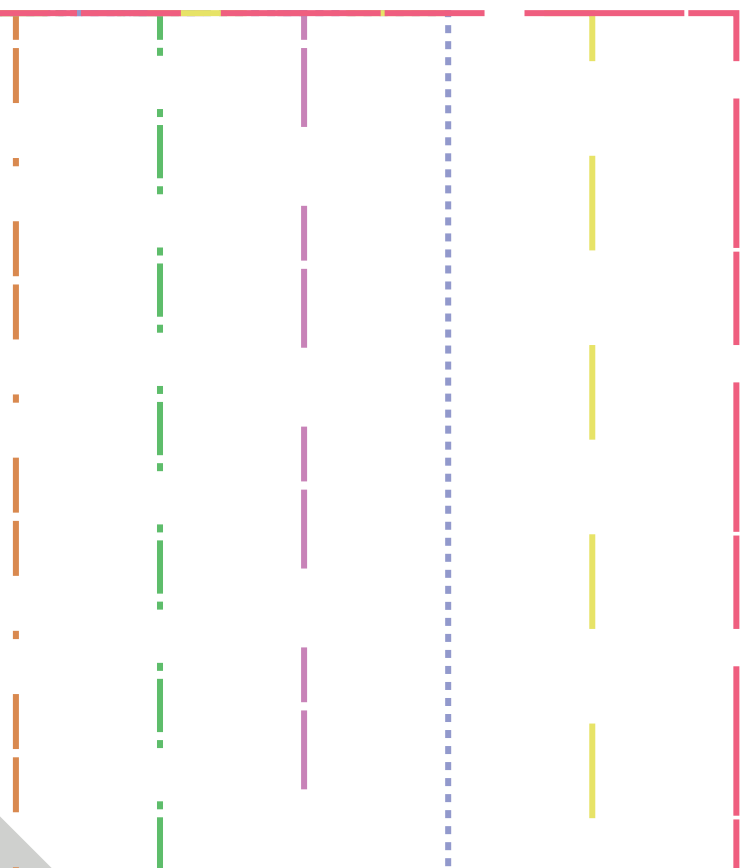


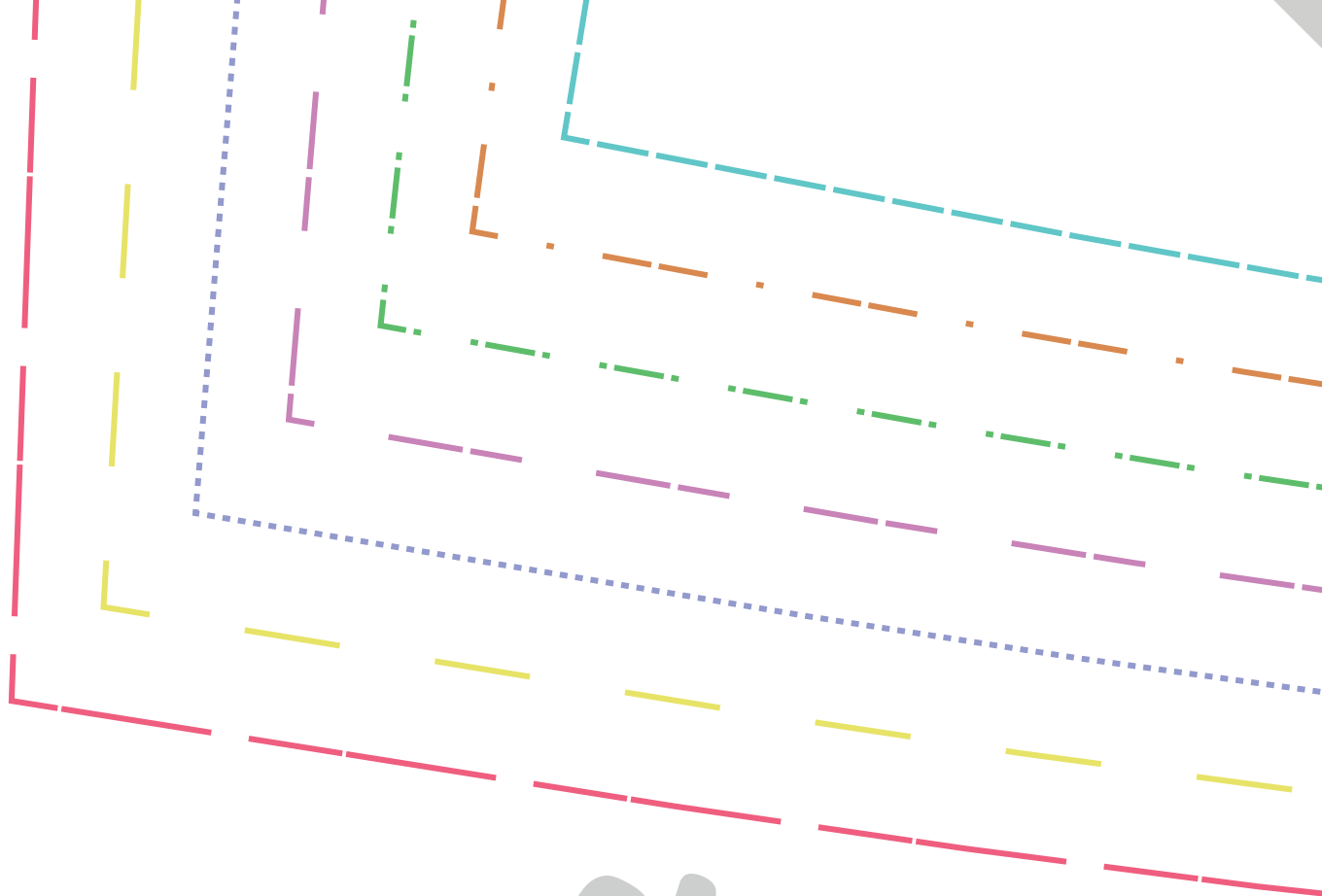


B5

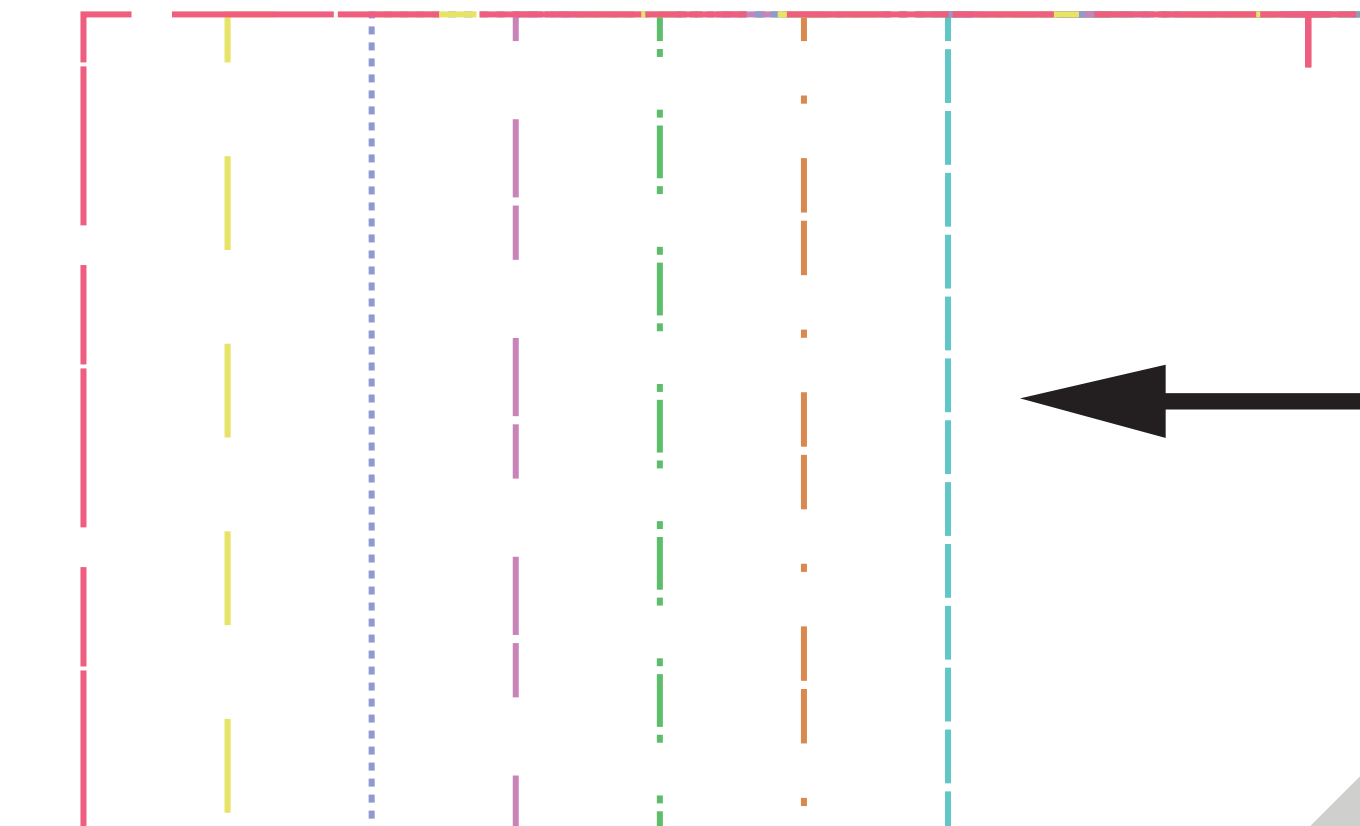


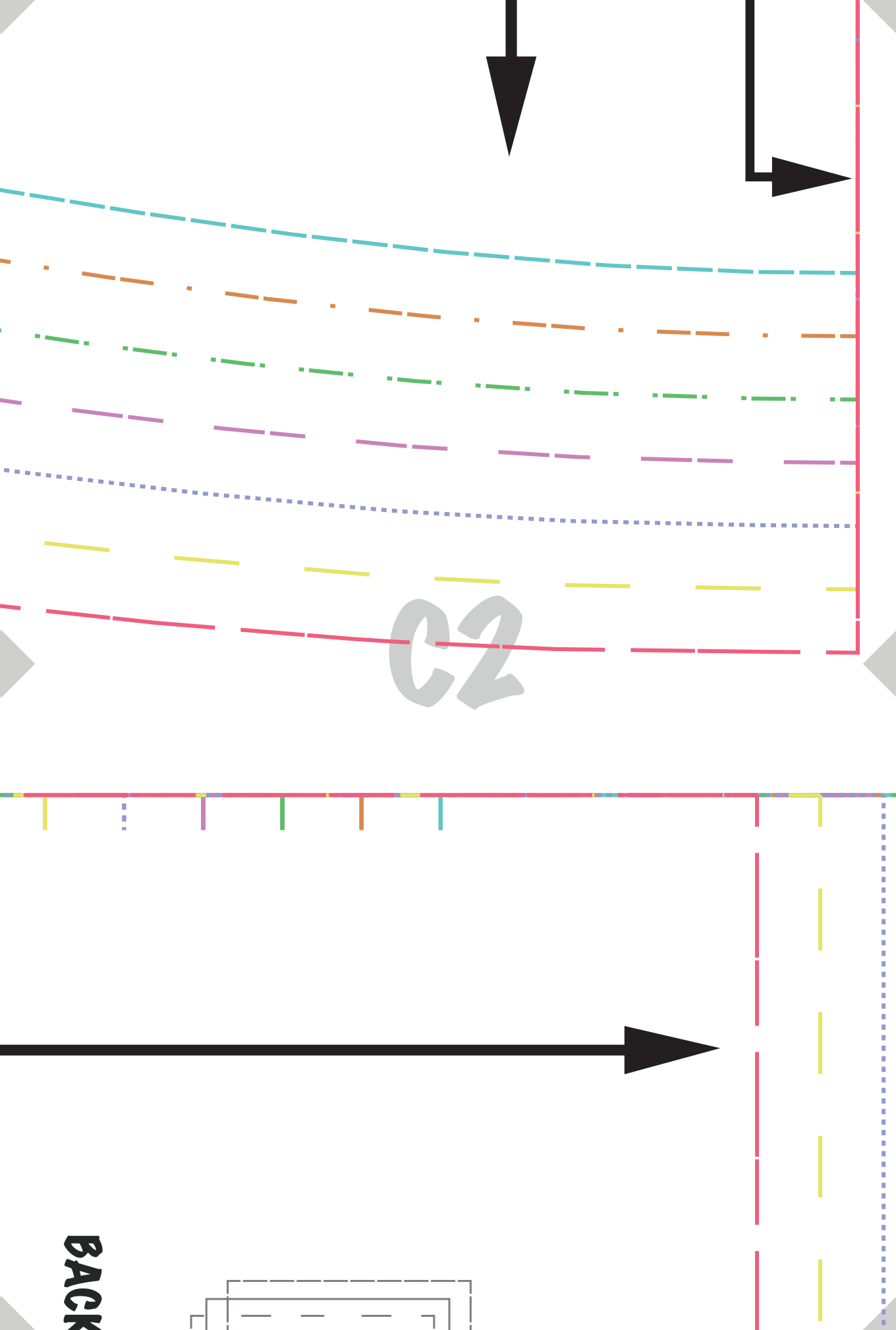
^F
SHOULDER STRAP
CUT 2





c1





c2

BACK

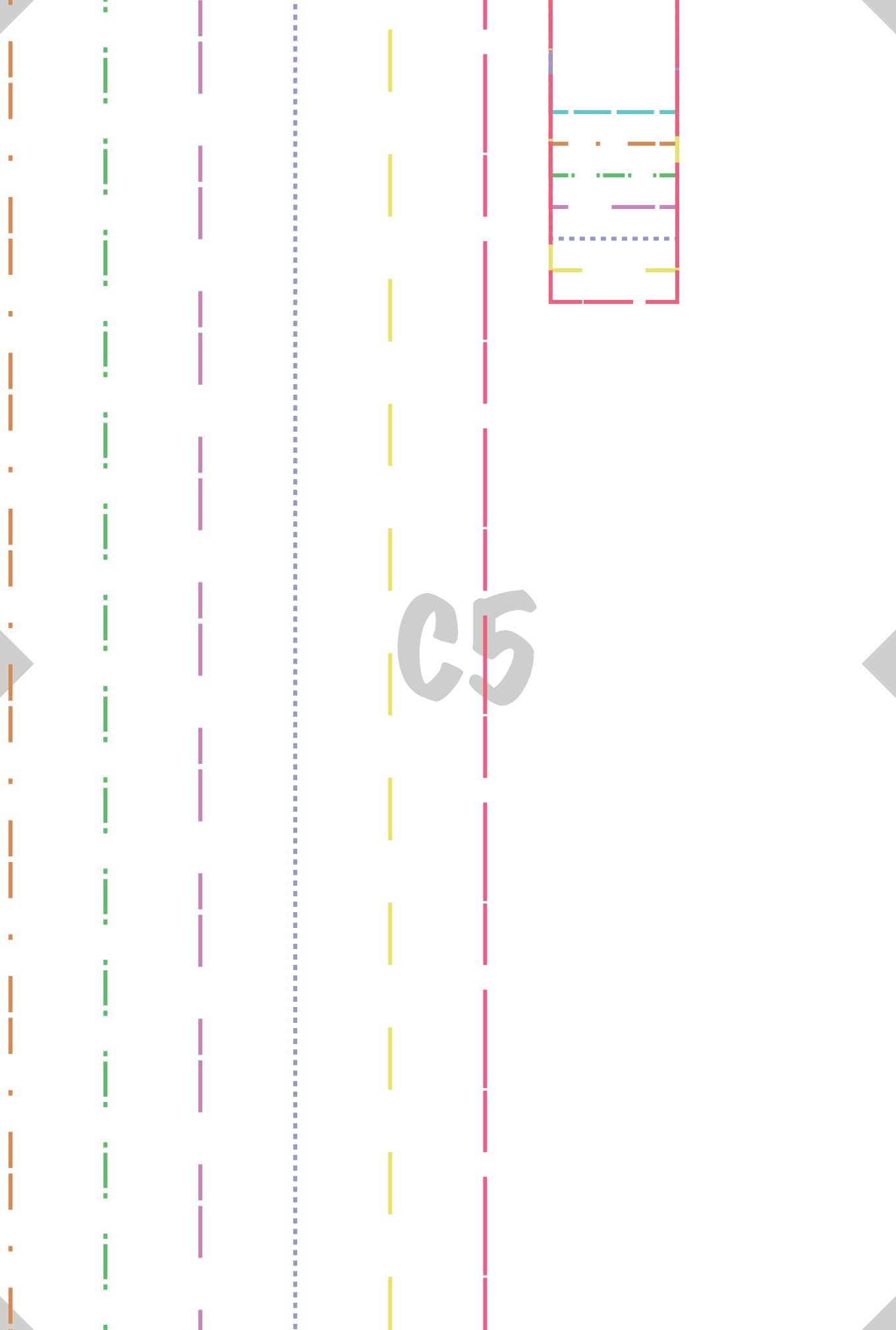
c3



C4

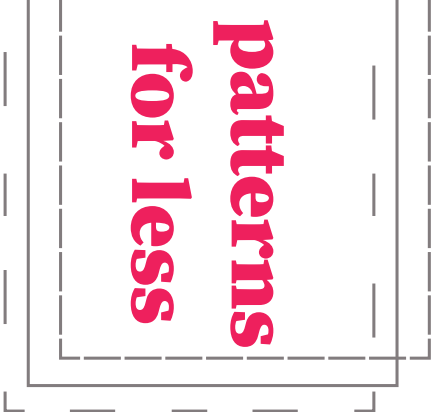
^c
FRONT BOTTOMS
CUT 1





C5

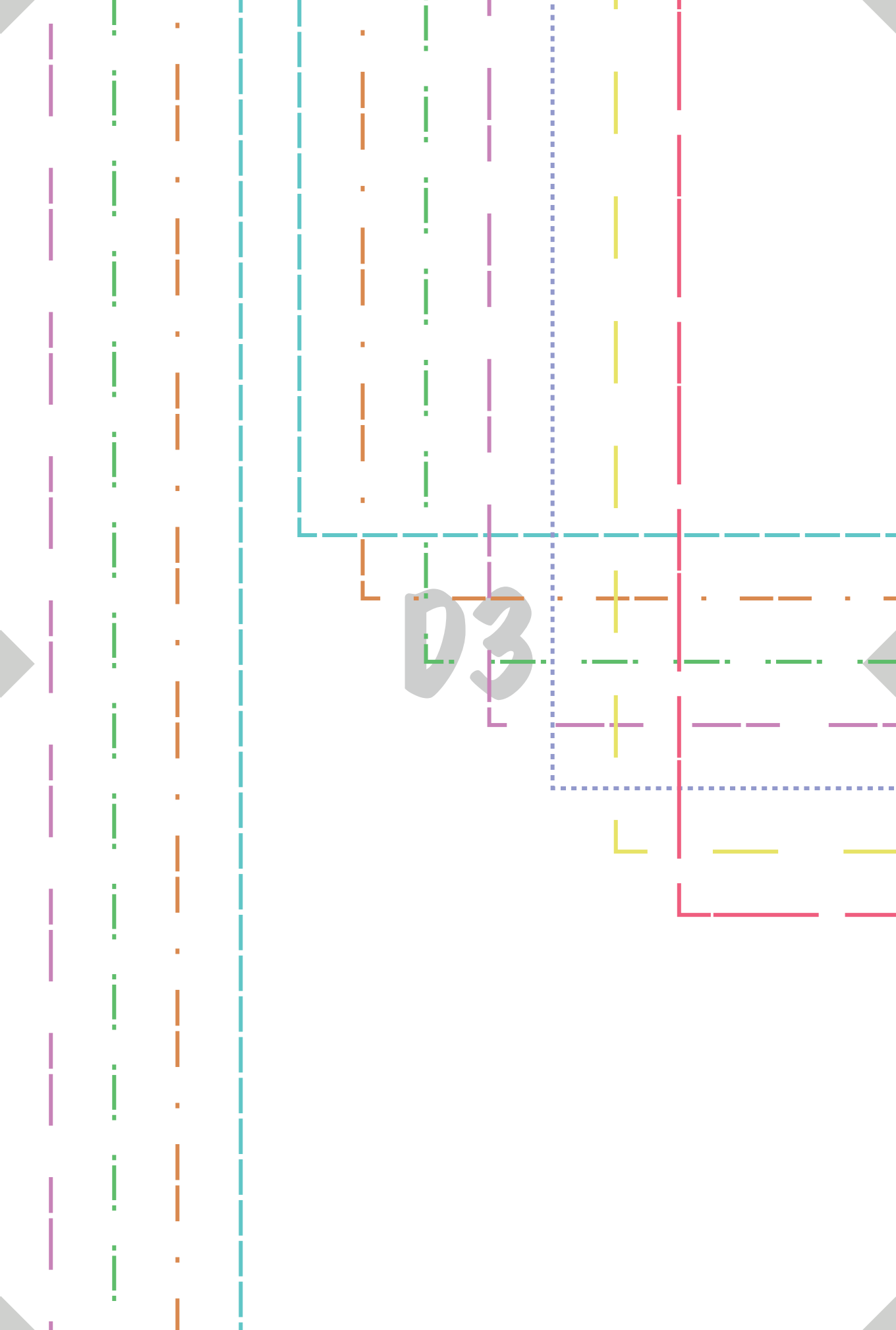
D1



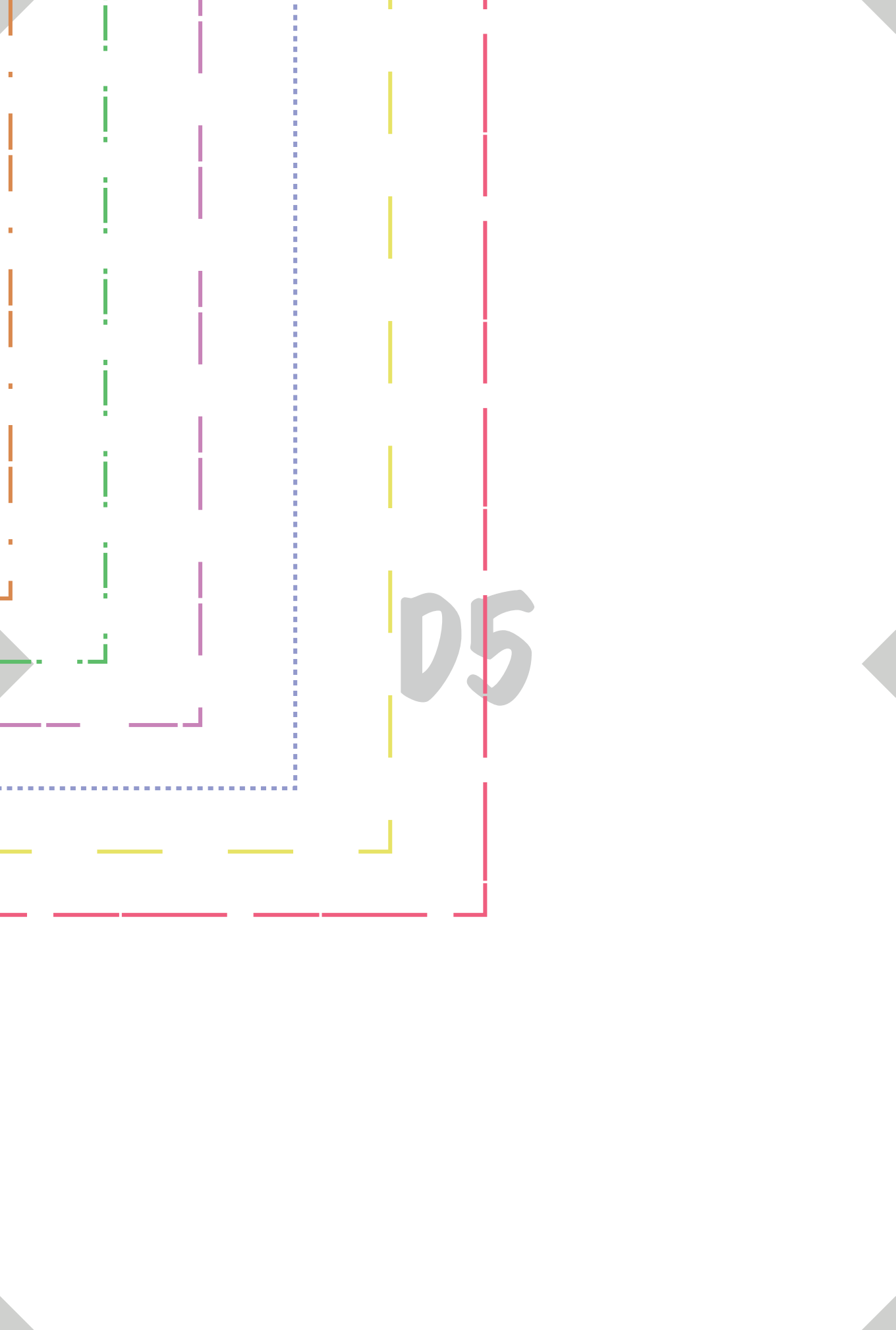
D2

E

SKIRT
BOTTOM SKIRT
CUT 2



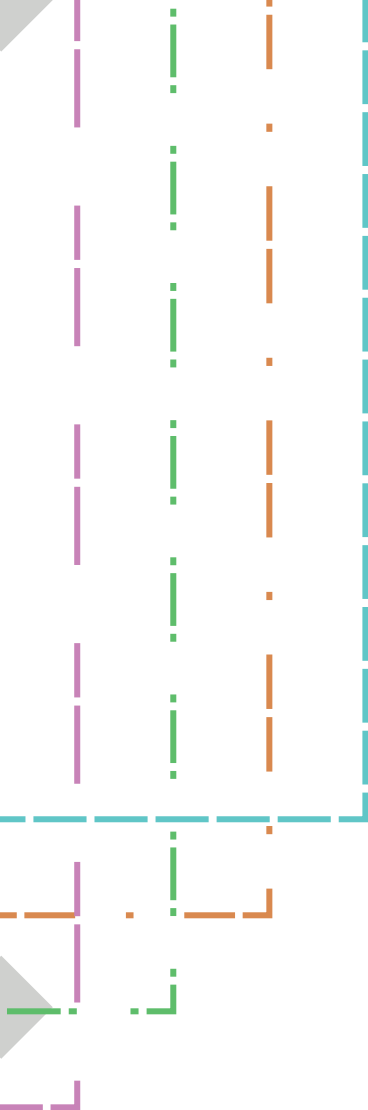
D4



D5

E1

E2



E3