

ROCWARE

# RC841U 4K PTZ Camera

zoom Certified



Rocware RC841U 4K UHD Video PTZ Camera has Sony's 1/2.5 inch CMOS sensor with 4K quality at an impressive 30fps. The horizontal angle is comfortable at 80.8° and has a 12X lossless optical zoom.

Supports AI humanoid tracking and auto-framing so that you can choose to focus on individual or all team members. Everyone has a chance to be on the central stage.

With RM702 USB Cascade Microphones and S22 HiFi Speakers, we recommend you use it for a 60-100m<sup>2</sup> conference room.

# Main Features

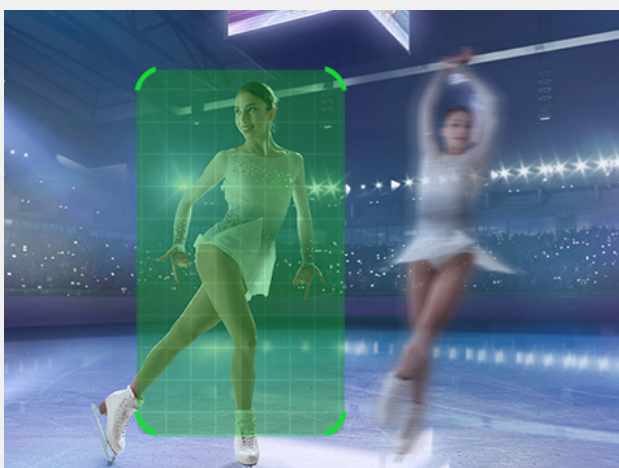
## 4K Ultra HD

The new generation of SONY 1/2.5-inch high-quality UHD CMOS sensor with a maximum of 8.51 million pixels enables high-quality images with ultra-high resolution of 4K (3840x2160). And backward compatible with 1080P, 720P and other resolutions.



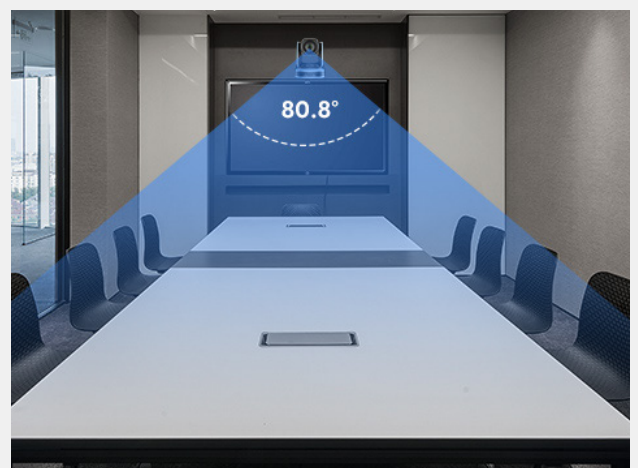
## Upgraded AI tracking

Using upgraded AI technology, through face detection, it can accurately determine the location of people to realize auto tracking and auto framing function.



## 80.8° wide-angle lens

Exclusive customized high-quality true 8 million ultra-high-resolution ultra-wide-angle lens, horizontal field of view up to 80.8°, optical zoom up to 12x, and support 16x digital zoom.



## Low illumination

The new CMOS image sensor with ultra-high noise ratio can effectively reduce image noise in low illumination conditions, and at the same time apply 2D and 3D noise reduction algorithms to greatly reduce image noise, even in ultra-low illumination conditions, still keep the picture clean and clear, and the image signal-to-noise ratio is as high as 55dB.

## Auto Framing

RC841U can accurately obtain the number and distribution of participants through face detection, intelligently control PTZ cameras to capture all participants in the screen, and adjust to the best screen.



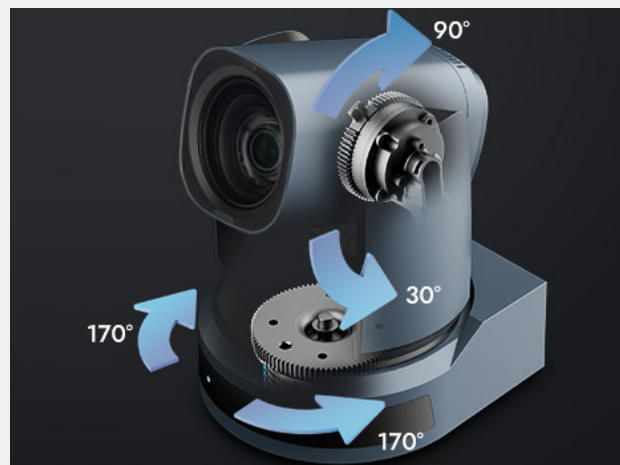
## PoE support

The wired network supports PoE power supply, and control, power supply, video and audio can be completed with only a network cable.



## Silent Mechanical PTZ

Equipped with a silent mechanical PTZ, this camera has a  $\pm 170^\circ$  horizontal rotation range and a  $-30^\circ \sim +90^\circ$  vertical rotation range, fully covering the entire conference room space and leaving no blind spots, even in corner positions.



## Remote control

Multiple control methods, using RS232 (RS485 optional) serial port, network and USB, to control the camera.

## Full-featured USB interface

Full-featured USB Type-C interface, compatible with USB3.0 and USB2.0, support audio, support encoding output, support UVC v1.1~1.5 protocol.

## H.264 Slice/H.264 SVC encoding support

The output H.264 code stream supports Slice and SVC encoding modes to accommodate high-end USB conference video applications.

# Product Interface



- 1.RS232 Interface
- 2.NET Interface
- 3.HDMI Interface
- 4.USB3.0 Interface
- 5.Line IN Interface
- 6.DC 12V Power Jack

# Remote Control

## 1.(Standby) Key

Press to enter standby mode. Press again to resume to normal mode.

## 2.Numeric Key: To set preset or call preset.

## 3.\* Key: Use with other keys.

## 4.PRESET Key

Set preset: Store a preset position.  
[PRESET] + Numeric key (0-9): Set the preset position.

## 5.HOME Key

Confirm selection or press to turn the lens back to the middle position.

## 6.(Return) Key: Press to return to the previous menu.

## 7.ZOOM Key

## 8.L/R SET Key

## 9.FOCUS Key

Press [AUTO] to adjust the focus automatically.  
Press [MANUAL] to adjust the focus manually.  
When in manual focus mode, press [FAR] to focus on far object or [NEAR] to focus on near object.



## 10.CAMERA SELECT Key

Press the button corresponding to the camera you want to operate with the remote controller.

## 11.# Key

Use with other buttons.

## 12.Auto Tracking Key

[F1]: Not enabled  
[F2]: Not enabled  
[F3]: Start AI Intelligent Tracking  
[F4]: Stop AI Intelligent Tracking

## 14.PTZ Control Key

After zooming, press arrow button to perform panning and tilting. Press [HOME] button to face the camera back to front.

## 15.MENU Key

Enter or exit OSD MENU.

## 16.BACKLIGHT Key

Backlight ON/OFF: Press repeatedly to enable or disable the backlight compensation.

## 17.P/T RST (PTZ Reset) Key

# Product Specifications

Camera	
Video System	HDMI: 4KP30,4KP25,1080P30,1080P25
Sensor	1/2.8", CMOS, Effective Pixel: 8.51M
Scanning Mode	Progressive
Lens	12X, f=3.47mm ~ 41.65mm, F1.84 ~ F3.72
Digital zoom	16X
Minimal Illumination	0.5Lux @ (F1.8, AGC ON)
Shutter	1/30s ~ 1/10000s
White Balance	Automatic, indoor, outdoor, one-touch, manual, specify the color temperature
Backlight Compensation	Support
Digital Noise Reduction	2D & 3D Digital Noise Reduction
Signal Noise Ratio	≥55dB
Horizontal Angle of View	80.8° ~ 7.5°
Vertical Angle of View	49.9° ~ 4.3°
Horizontal Rotation Range	±170°
Vertical Rotation Range	-30° ~ +90°
Pan Speed Range	2.7° ~ 35.7°/s
Vertical Rotation Speed Range	2.7° ~ 31.5°/s
H & V Flip	Support
Image Freeze/Po	Support
Number of Preset	255
Preset Accuracy	0.1°

## Input/Output Interface

USB Interface	1xUSB 3.0, Type-C Jack
HDMI Output	1 x HDMI1.4b
Network Interface	1 x RJ45: 10M/100M Adaptive Ethernet Port
Audio Interface	1x Line In, 3.5mm Audio Interface
Communication Interface	1 x RS232 In: 8pin Min DIN, Max Distance: 30m, Protocol: VISCA/Pelco-D/Pelco-P
Power Jack	JEITA type (DC IN 12V) / PoE(802.3af)

## USB Featured

Operate System	Windows 7, 8, 10, Mac OS X, Linux, Android
Color System / Compression	YUY2 / MJPEG / H.264
Video Format	YUY2 Max: 1080P@30fps MJPEG: Max: 2160P@30fps H.264 AVC: Max: 2160P@30fps H.264 SVC: Max: 2160P@30fps
USB audio	Support
USB Video Communication Protocol	UVC 1.1~1.5
UVC PTZ Control	Support

IPC Features	
Video Compression	H.264/MJPEG
Video Stream	The first stream, the second stream
Main Stream Resolution	3840x2160,1920x1080,1280x720,1024x576,960x540,640x480,640x360
Sub Stream Resolution	1920x1080,1280x720,1024x576,720x576,720x480,720x408,640x360,480x270,320x240,320x180
Video Bit Rate	32Kbps ~ 102400Kbps
Bit Rate Type	Variable Rate, Fixed Rate
Frame Rate	50Hz: 1fps ~ 50fps, 60Hz: 1fps ~ 30fps
Audio Compression	AAC
Audio Bit Rate	96Kbps, 128Kbps, 256Kbps
Support protocols	TCP/IP, HTTP, RTSP, RTMP, Onvif, DHCP, Multicast, etc.

## Generic Specification

Input Voltage	DC 12V / PoE(802.3af)
Input Current	12V 1.0A(Max)
Operating Temperature	-10°C ~ 40°C ( 14°F ~ 104°F )
Storage Temperature	-40°C ~ 60°C ( -40°F ~ 140°F )
Power Consumption	12W ( Max )
MTBF	>30000h
Size	142*152*176mm
Net Weight	1.5Kg ( 3.30 lb )

# ROCWARE®

## ROCWARE CORPORATION

Web : [www.rocware.com](http://www.rocware.com)

TEL : +1-800-416-1895

Address : 1773 West San Bernardino Road, Unit E72, West Covina, CA 91790

Mail : [rocware@rocware.com](mailto:rocware@rocware.com)



[www.rocware.com](http://www.rocware.com)

**Customer Service:** • 1.5 Year Free Warranty

• 7 X 24 Hours Service

• Local Service & Support

Rocware reserves right of final interpretation for this catalogue.