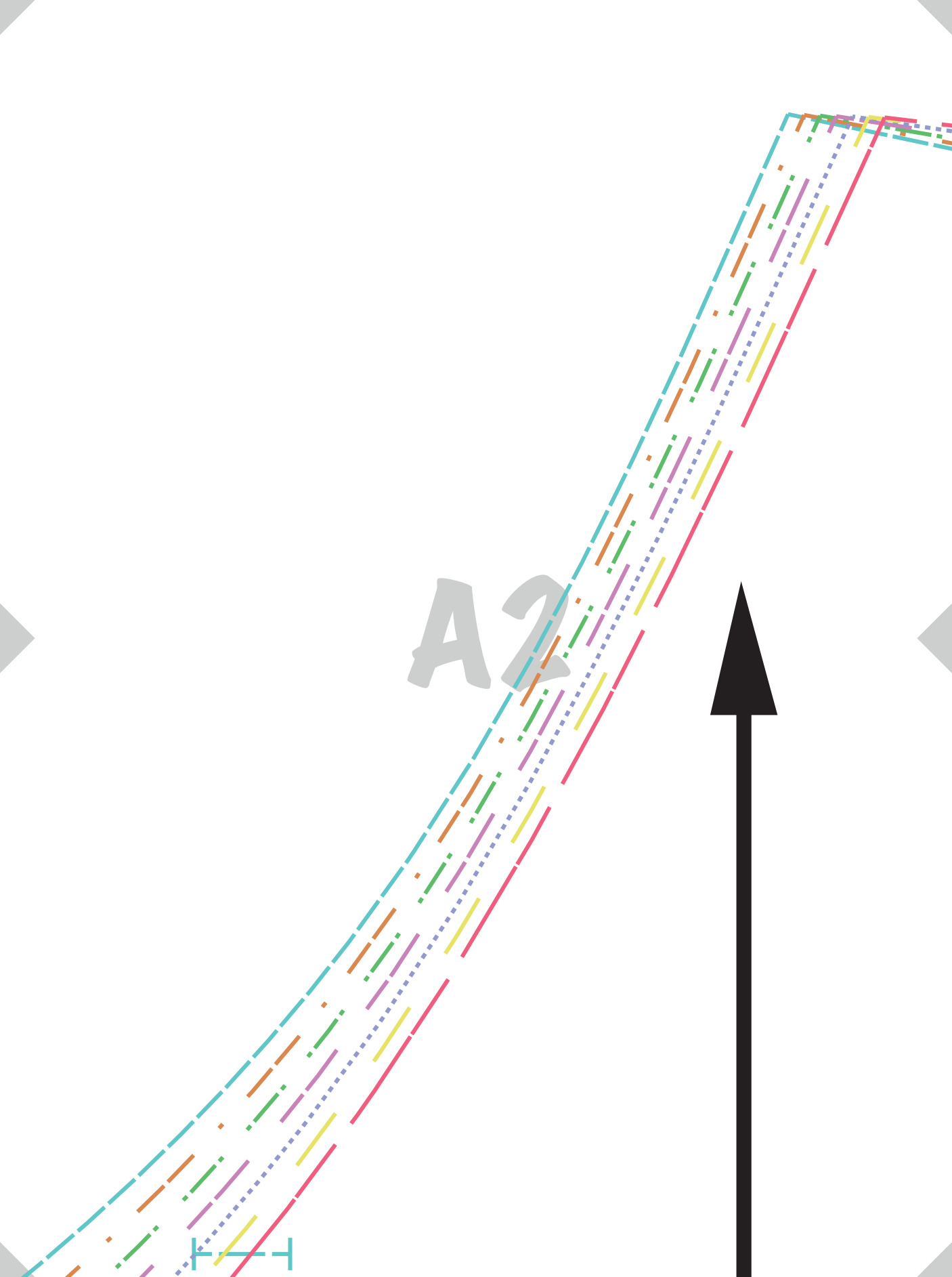


TEST SQUARE
2" X 2"
5 CM X 5 CM

XS	— — — —
S	— — — —
M	— — — —
L	— — — —
XL	— — — —
XXL	— — — —
XXXL	— — — —

A1





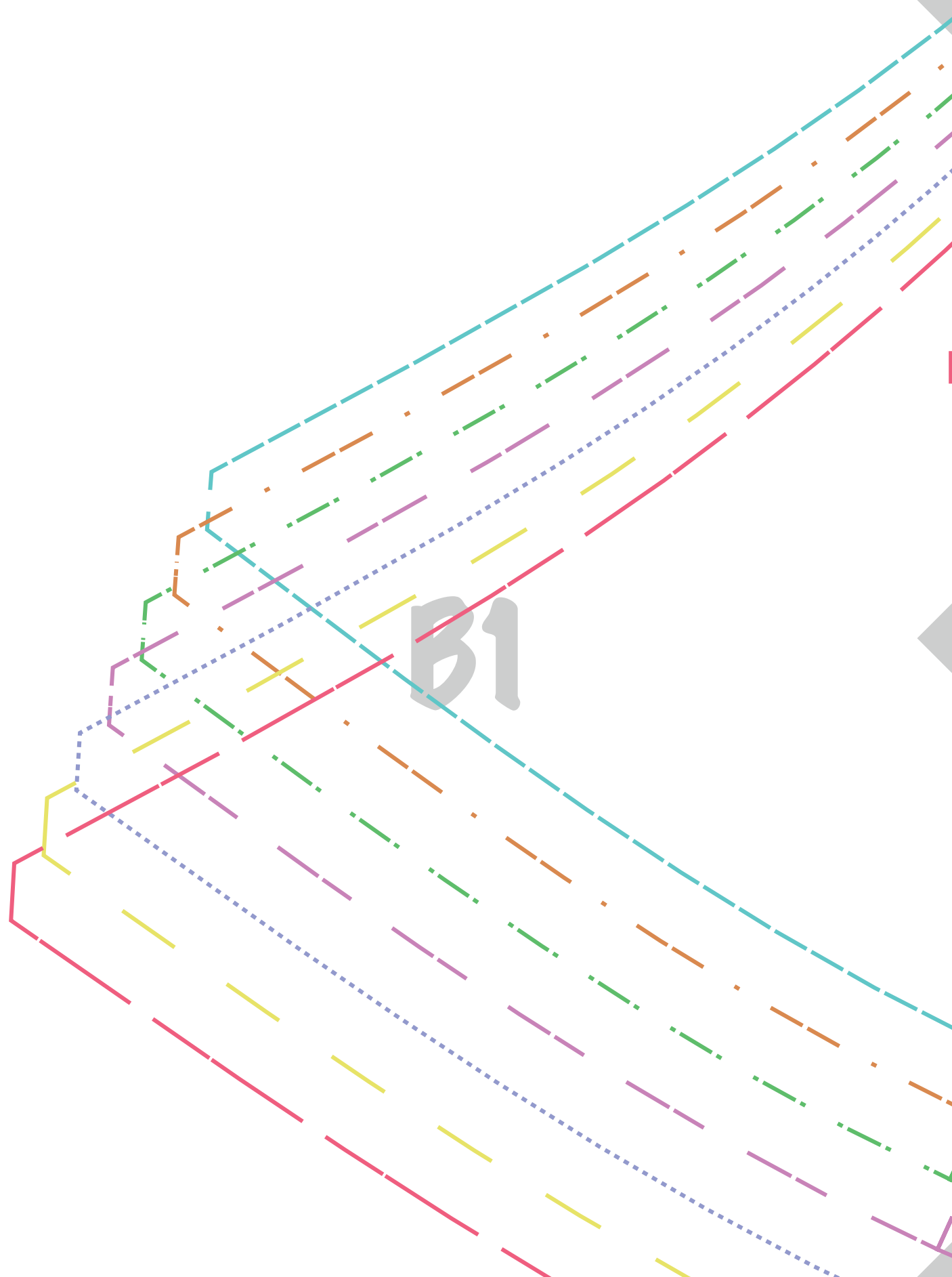
A3

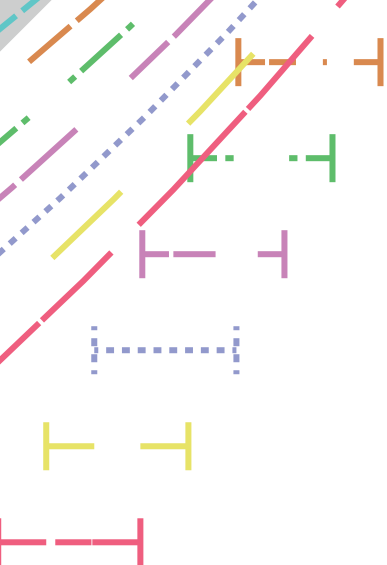
The image features a series of parallel, dashed lines in various colors (red, yellow, purple, green, orange, and teal) that curve from the top left towards the bottom right. The lines are of varying lengths and are set against a light gray background. The text 'A3' is centered in the middle of the image in a large, bold, gray font. In the bottom left corner, there is a small, dark gray rectangular area containing a white line drawing of a corner or a small structure.

A4

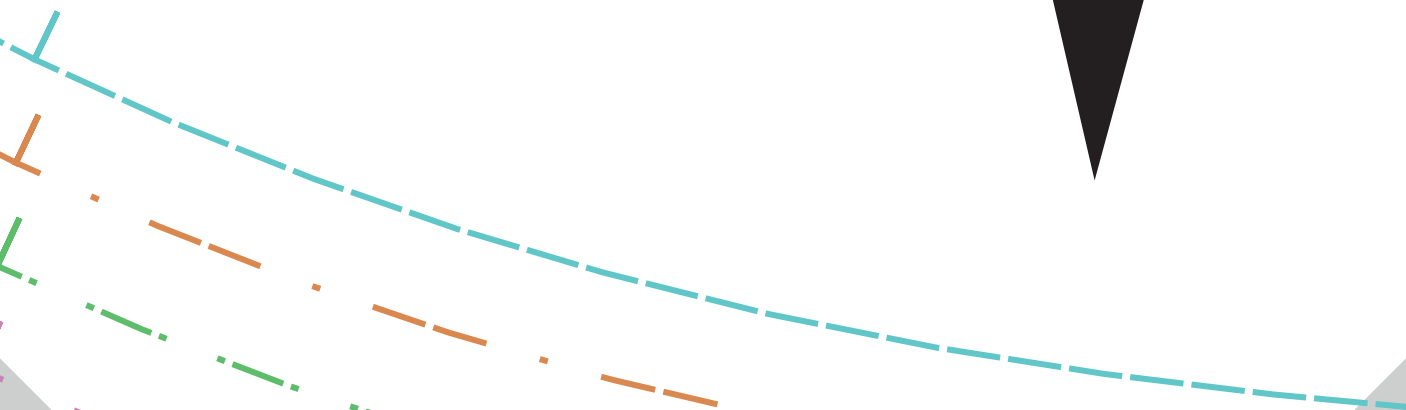
A5

B1





B2



**patterns
for less**

**A
FRONT TOP
CUT 2**

B3

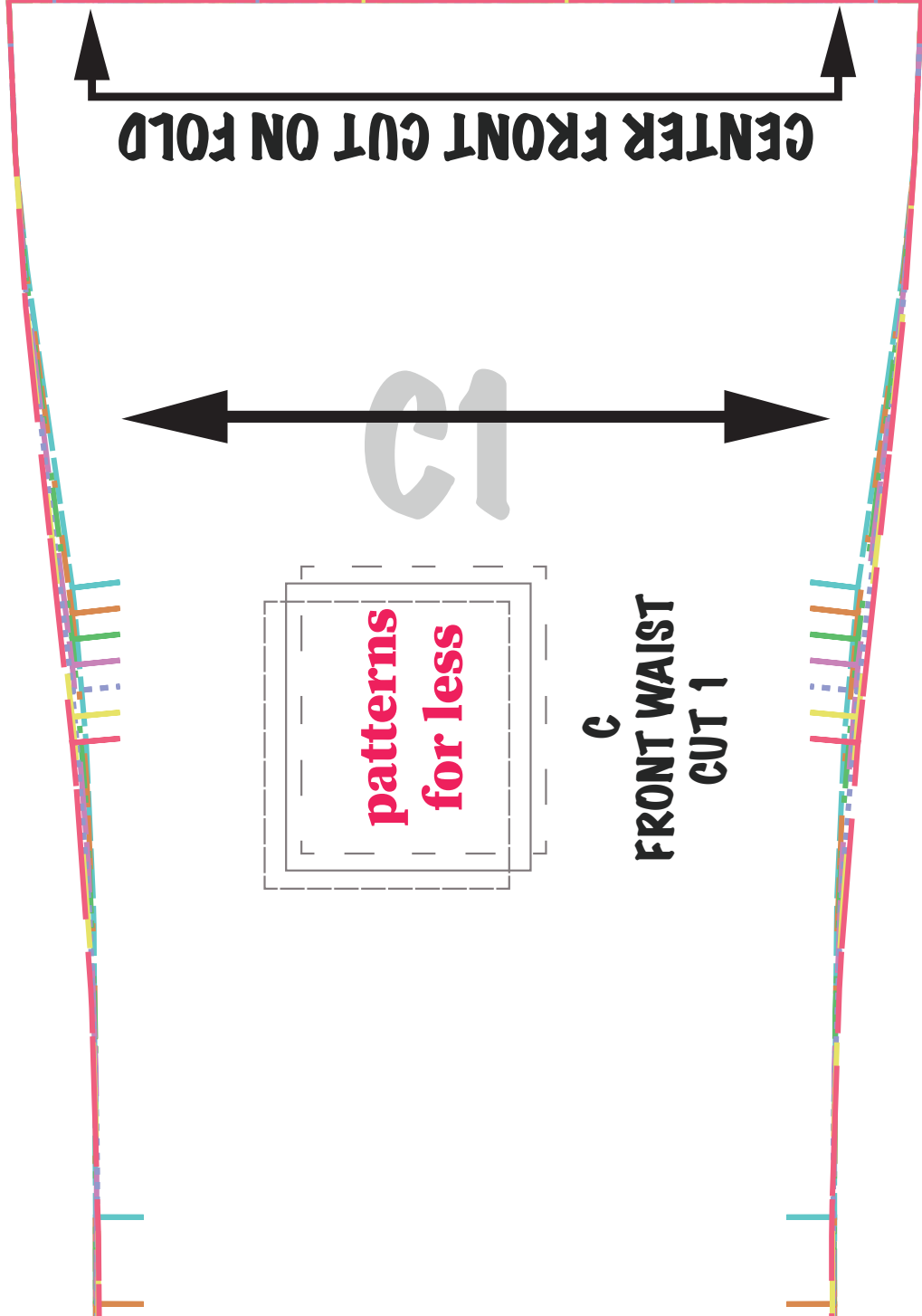




The background features a series of parallel diagonal lines in various colors: teal, orange, green, purple, blue, yellow, and pink. These lines are spaced out and extend from the bottom-left towards the top-right. The text 'B4' is centered in a large, bold, grey font.

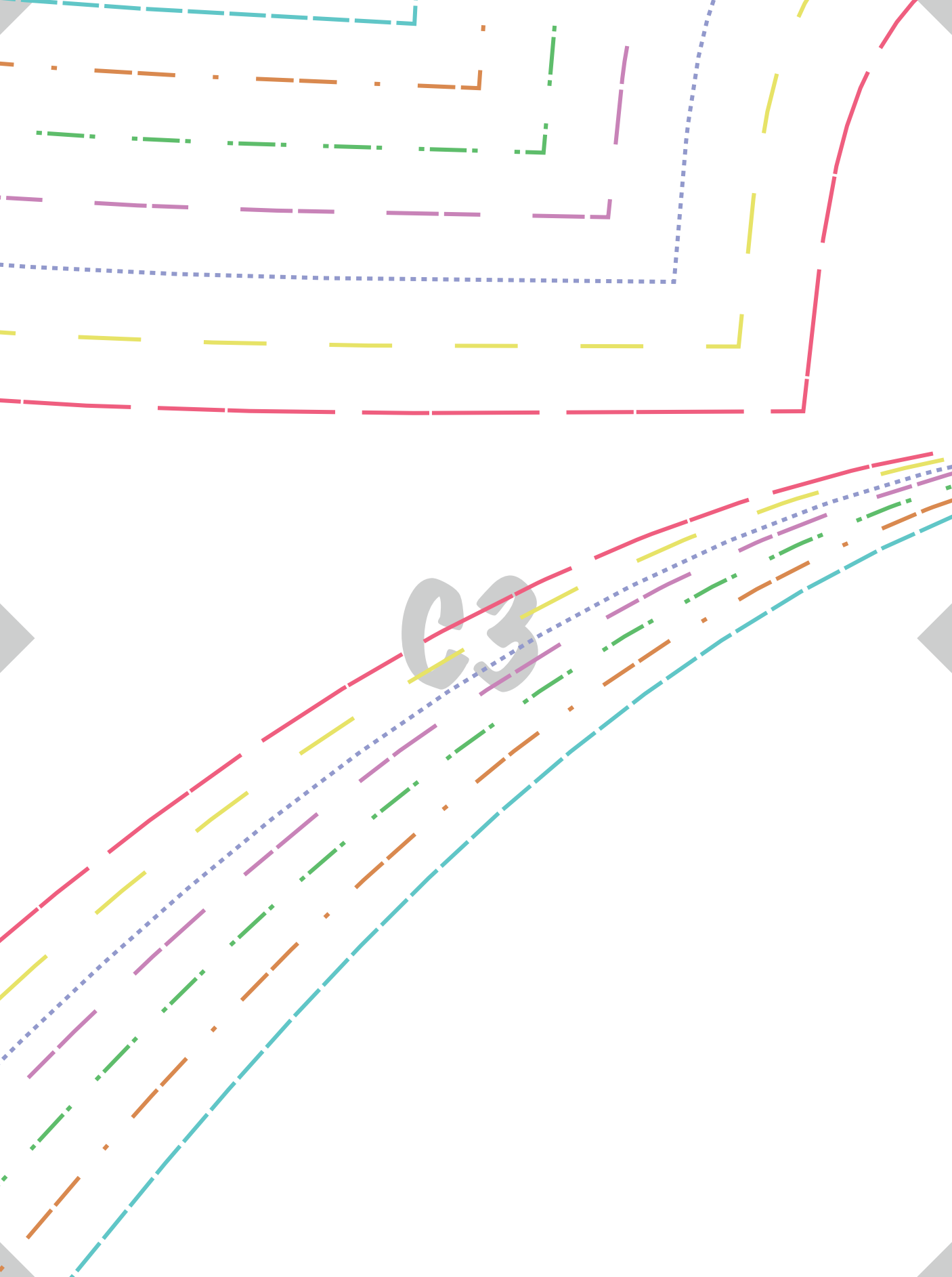
B4

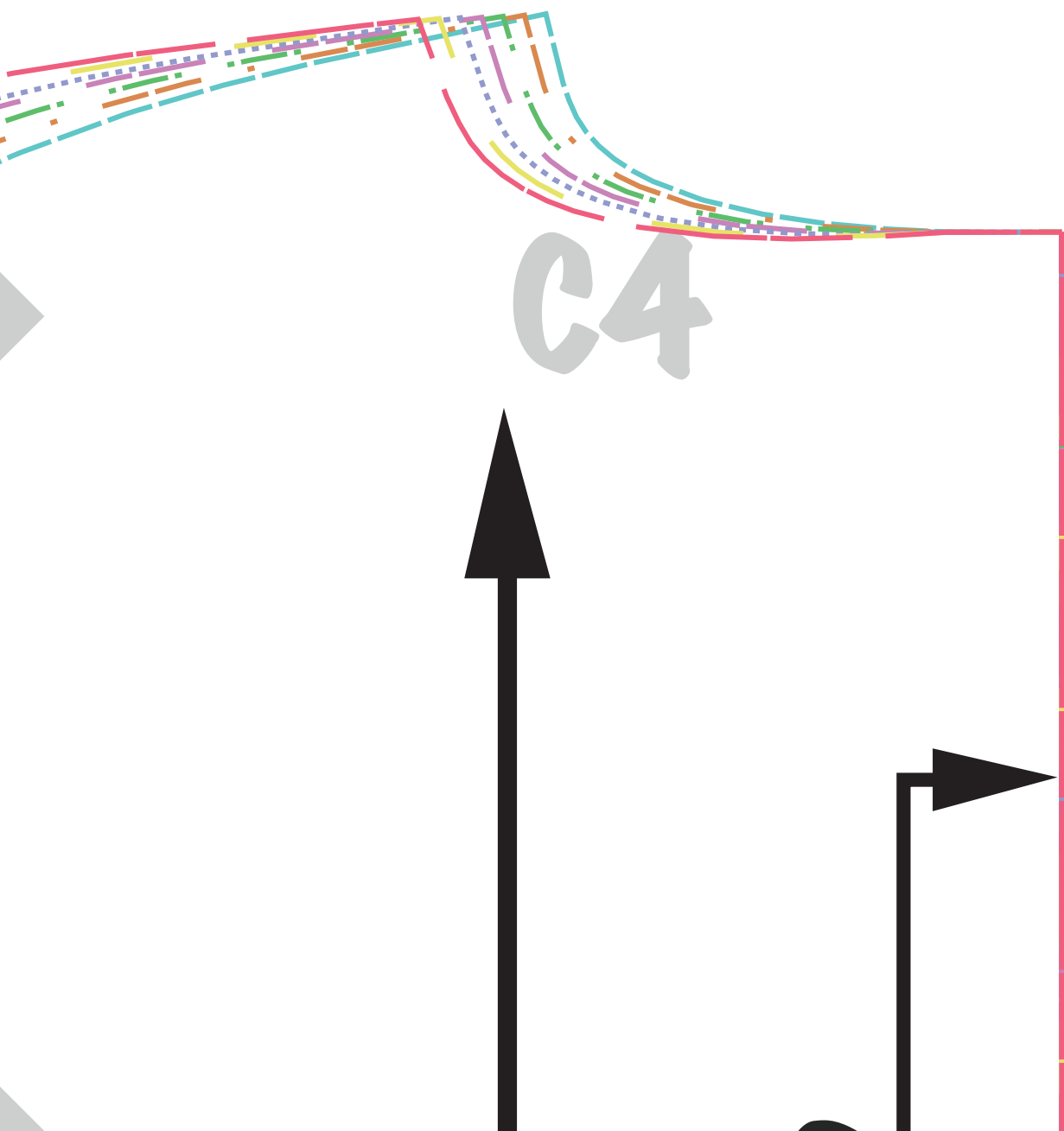
B5





C2





C5



The background is a light gray gradient. It features several sets of parallel lines in various colors: red, yellow, purple, green, orange, and blue. These lines are mostly diagonal, running from the top-left towards the bottom-right. Some lines are solid, while others are dashed or dotted. The lines vary in length and are scattered across the page. In the center, the text 'D2' is displayed in a large, bold, gray font.

D2

**patt
for**

D3

**BACK
CU**

**terns
less**

**B
K TOP
T 1**

D4

CENTER BACK CUT ON FOLD

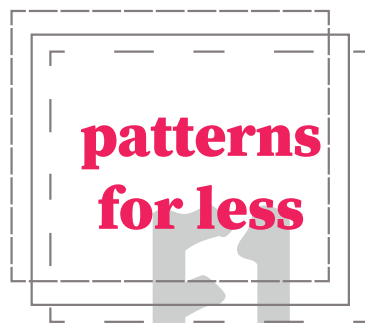




E
NECK INBINDING
CUT 1



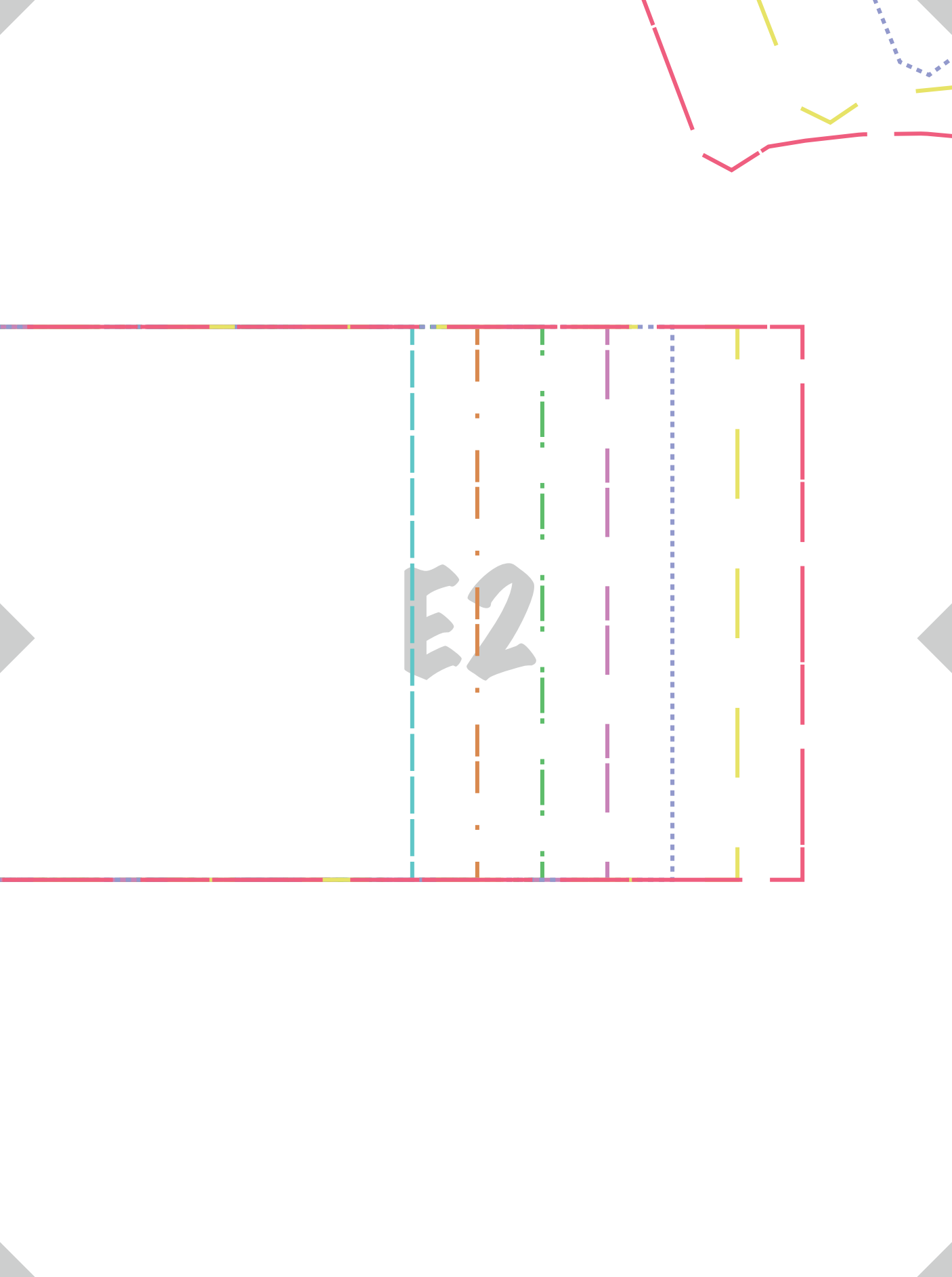
D5



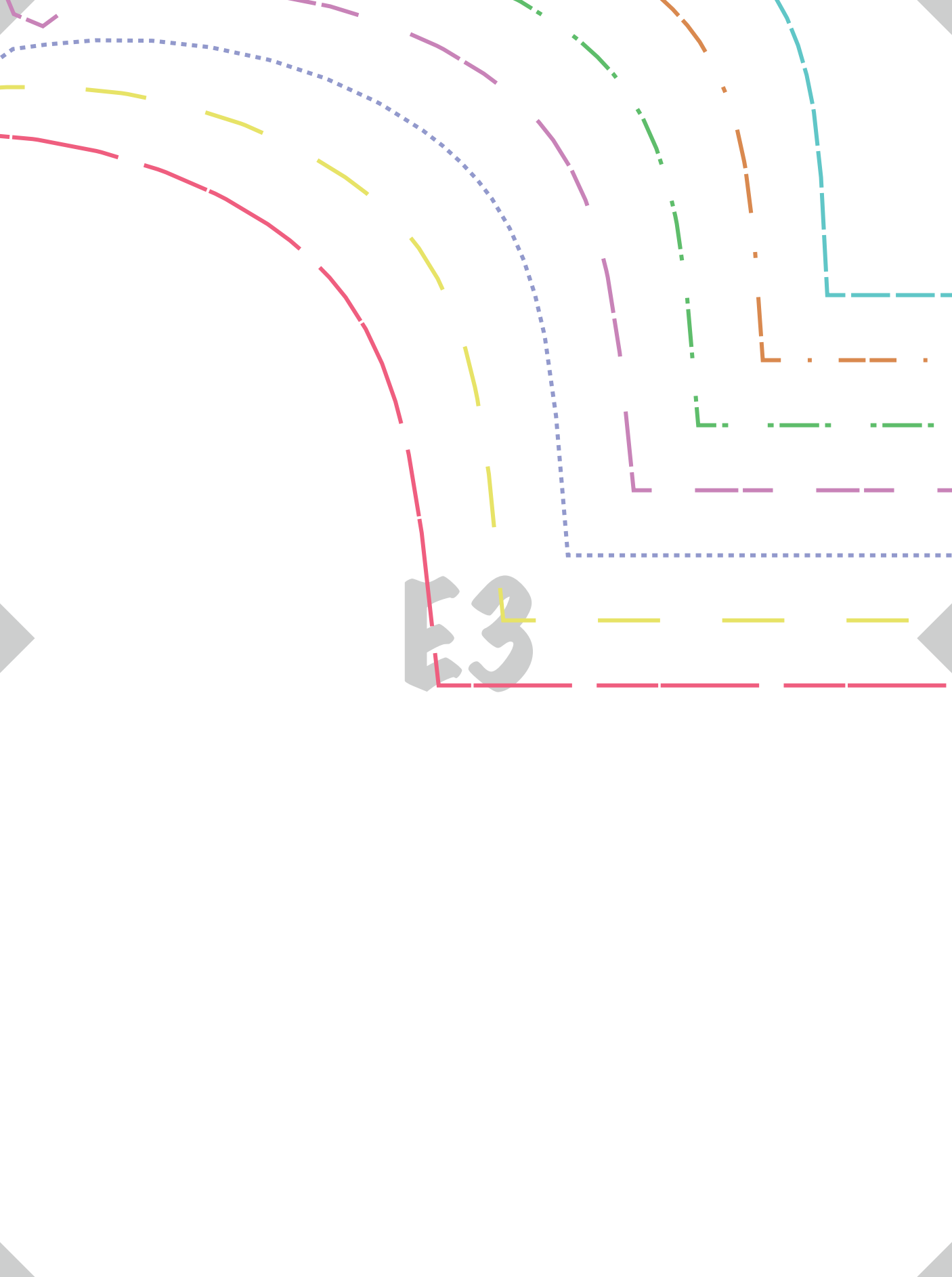
D
BACK WAIST
CUT 1

CENTER BACK CUT ON FOLD

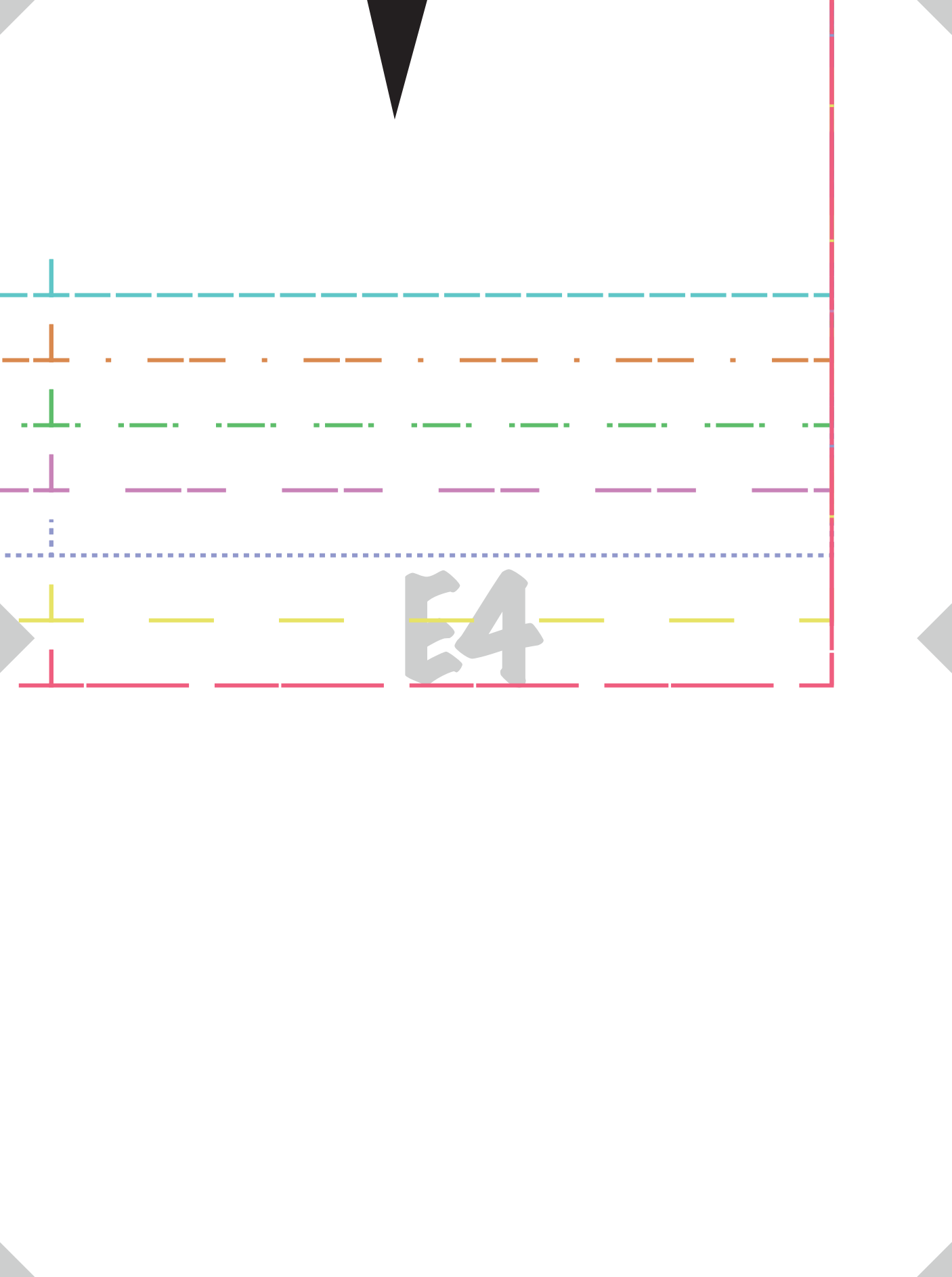




E2

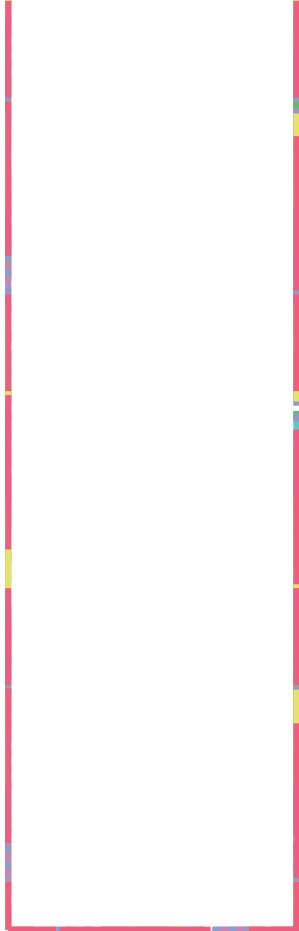


E3



E4

E5



F5